

# THE LINE

---

LEXUS 2014



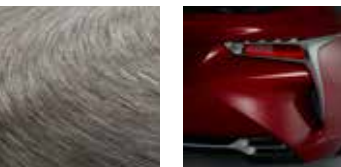
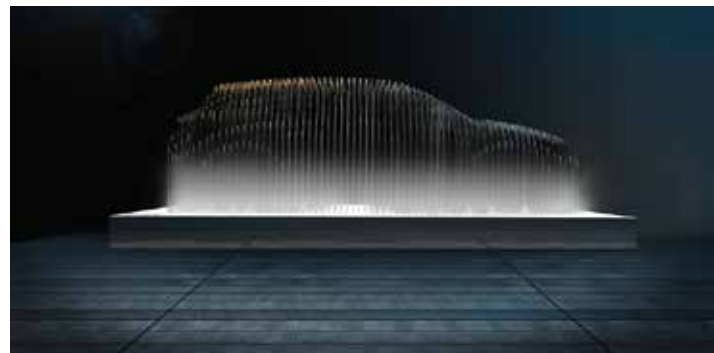


AMAZING *in* MOTION



# THE LINE // LEXUS 2014

## TABLE OF CONTENTS



### 👁️ DRIVEN by DESIGN

- 08 **Fractals, Leaves and Afterburners:** The inspiration behind the LF-LC concept
- 12 **A Story Behind Every Surface:** Turning materials into art forms

### 🎧 PERFORMANCE that INSPIRES

- 18 **Mr. Intangible:** The man behind the driving feel of every Lexus
- 20 **F Performance:** How the LFA blazed a new path for Lexus performance
- 24 **F SPORT Models:** Performance engineering for driving enthusiasts
- 26 **One Size Fits None:** Owners with a passion for customized performance and styling
- 28 **Virtual Reality:** Inside the innovative track-testing process
- 32 **All-Weather Drive:** Mother Nature is no match for Lexus innovation
- 34 **Diamond in the Rough:** Conquering the Baja 1000 in the LX

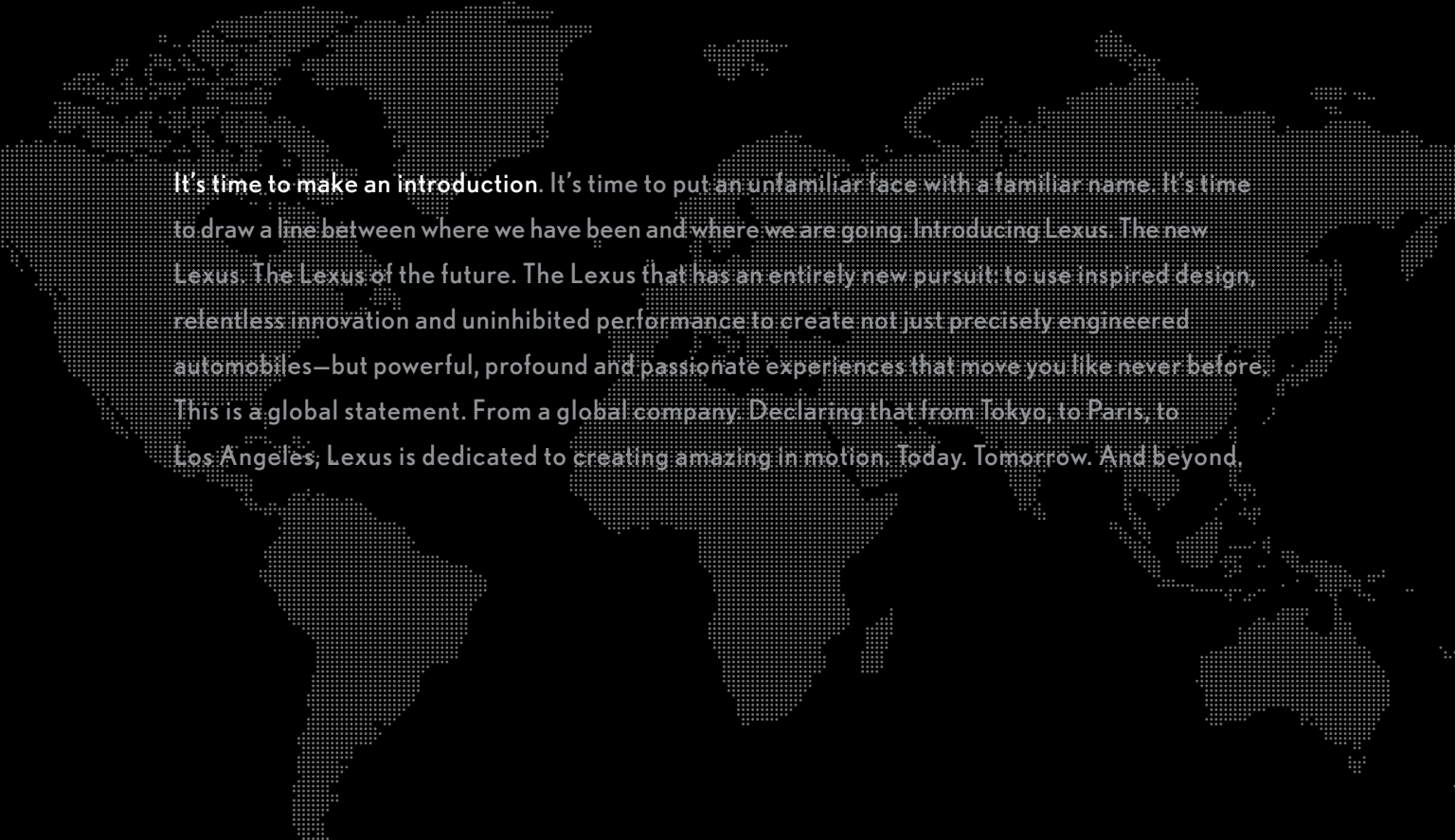
- 44 **Crash Test Genius:** An unconventional approach to safety testing
- 46 **Power of Ten:** The master craftsmen who make a Lexus a Lexus
- 48 **Artistry Meets Automation:** Using robots to duplicate the motions of the master
- 50 **Piece by Piece:** The methodical process behind raising the automotive bar
- 52 **A Study of People:** Crafting the ideal driving experience
- 54 **Pitch Perfect:** Two acoustic masterpieces, one ingenious system
- 56 **Destination Assist:** Lexus Enform® human-powered navigation
- 58 **Sustainable Design:** Making more of an impact by making less of one
- 60 **Lexus Delivery and Technology Specialists:** Helping you get the most out of your Lexus
- 62 **More Lexus Innovation:** The unparalleled Lexus dealership experience
- 64 **Opening Doors:** The unexpected benefits of Lexus ownership

### 🧠 CREATING the UNEXPECTED

- 38 **Lexus Hybrid Drive:** Lexus Hybrids' future-proof technology
- 40 **Hybrid Models:** Six generations of research in five vehicles
- 42 **Without a Scratch:** One man's story of Lexus safety engineering in the real world

### 🚗 2014 MODELS

68	LS	70	GS	72	ES
74	IS	76	ISC	78	ISF
80	CT	82	RX	84	GX
86	LX				



It's time to make an introduction. It's time to put an unfamiliar face with a familiar name. It's time to draw a line between where we have been and where we are going. Introducing Lexus. The new Lexus. The Lexus of the future. The Lexus that has an entirely new pursuit: to use inspired design, relentless innovation and uninhibited performance to create not just precisely engineered automobiles—but powerful, profound and passionate experiences that move you like never before. This is a global statement. From a global company. Declaring that from Tokyo, to Paris, to Los Angeles, Lexus is dedicated to creating amazing in motion. Today. Tomorrow. And beyond.



Organic shapes and flowing surfaces are juxtaposed against sharp and evocative lines to achieve what the LF-LC designers refer to as “fluid precision.”

1

## *DRIVEN BY DESIGN*



It's an approach that transcends aesthetics and function alone. From inspiration to production, Lexus vehicles are designed to captivate and connect with drivers like never before.



FRACTALS, LEAVES AND AFTERBURNERS: A LOVE STORY

---

*THE UNCONVENTIONAL INSPIRATION BEHIND THE LF-LC: THE HYBRID CONCEPT THAT OFFERS AN UNFORGETTABLE GLIMPSE INTO THE FUTURE OF LEXUS DESIGN AND TECHNOLOGY.*





The designers' vision: a vehicle that stirs all the senses, that seamlessly blends the emotional with the mechanical. To find this balance, they took cues from the best of both worlds. In sculpting its shape, they drew inspiration from the free-flowing lines of a leaf. The artistic, dynamic nature of fractals can be seen in the evocative stitching of its trim. And, to emphasize the feeling of motion and imposing performance, mirrors give its LED taillamps the appearance of infinite depth and mimic the look of a jet's afterburners during launch.





SADDLE TAN LEATHER TRIM (AVAILABLE RX)



HANDCRAFTED MATTE BAMBOO TRIM (GSh)



CONTRAST STITCHING (GSh)



*SHIMAMOKU* WOOD-TRIMMED STEERING WHEEL (LS)  
Unlike anything else in the world, the alternating dark and light layered design of the available *Shimamoku* Espresso wood trim is achieved through a demanding 67-step process over the course of 38 days. The stunning result pairs the organic feel of natural wood with a design more reminiscent of modern art.

## A STORY BEHIND EVERY SURFACE

Wood, leather and metal. When crafted with a master's touch and an inspired sense of design, everyday materials can be transformed into captivating works of art. From the *Shimamoku*-trimmed steering wheel offered on the LS to the distinctive hand-stitched trim that requires such precision that only 12 artisans have proven worthy of the task, a Lexus interior isn't something only meant to be seen. It's meant to be experienced.



RETRACTABLE WOOD-TRIMMED CONSOLE TABLE (AVAILABLE LS)







**IS F SPORT**

Tested and tuned on the world's most iconic racetracks, the new 2014 IS F SPORT creates an unprecedented visceral connection between driver and pavement.

2

*PERFORMANCE THAT INSPIRES*



From the track-honed line of F and F SPORT vehicles to the innovative capability of our utility vehicles, Lexus offers pure exhilaration on demand.

# MR. INTANGIBLE

THE MAN BEHIND THE DRIVING FEEL OF EVERY LEXUS

---

You won't find him scrutinizing gap tolerances, calculating air-fuel ratios or recording drag coefficients. The only measurement he's responsible for can't be recorded at all: He knows it when he feels it. Tuning a Lexus like an instrument, master craftsman Yoshiaki Ito doesn't rest until he's achieved the right harmony between the road, the vehicle and the driver's senses. It's a skill that only decades of test driving and an expert knowledge of mechanics can teach. Not enough traction during that last maneuver? He'll pull over, put on his coveralls and make a slight adjustment so that next time, there will be. Even Mother Nature can't stand in his way. When a storm knocked out a track's floodlights during a night test, he continued on in total darkness, unfazed. And, why not: The one thing he's looking for can't be seen anyway.

---





## IT BEGAN WITH A QUESTION. AND ENDED WITH AN EXCLAMATION POINT.

—

THE WORLD-RENOWNED LFA SUPERCAR LAYS THE FOUNDATION FOR THE NEXT GENERATION OF LEXUS PERFORMANCE.



### THE GENESIS

The task: Create the ultimate driver's car. One that wouldn't only challenge records set by the world's top supercars but, more importantly, stir the driver's senses in a way no vehicle ever had before. Rather than relying on the heritage of yesterday, it would require inventing the performance technology of tomorrow. If ever there were a leader with the passion to realize this vision, it would be company president Akio Toyoda. If ever there were a company to accept this challenge, it would be Lexus. It wouldn't be the first time Lexus revolutionized the industry. The introduction of the LS two decades prior forever changed the way manufacturers approach craftsmanship and customer service. The next chapter was beginning, and only one question remained: Could it be done?

### THE ENGINEERING

That question would push engineers to rethink all aspects of performance engineering. They developed new technology to maximize engine power while minimizing weight. With a design inspired by F1 racing, they engineered a lightweight V10 that generated 552 horsepower<sup>1</sup> while taking up the same space as a traditional V6 engine. They worked alongside Yamaha's musical instrument division to tune the visceral sound of the engine, achieving what the Chief Engineer refers to as "the roar of an angel"<sup>2</sup>—a high-performance serenade that is as emotional as it is exhilarating. And, after five years of using a lightweight aluminum-alloy body, the standard choice for supercars, engineers abandoned the design and set out to create one made with stronger and lighter carbon fiber. Most companies would spend a decade to research and develop the carbon fiber technology. We gave ourselves one year.

Lexus engineers set out to use carbon fiber composite for the entire chassis, body panels and roofline. Only one problem: There was no way to create complex, three-dimensional shapes using sheets of woven carbon fiber. So we invented one. Using the world's first carbon fiber circular loom, the future of automotive performance began to literally take shape. At which point, we set our sights on the next hurdle: the world's most challenging proving ground.

### THE RESULT

In 2008, at the urging and in the hands of legendary master test driver, the late Hiromu Naruse, the LFA entered its first 24 Hours Nürburgring race. The demanding

12.9-mile loop pushes vehicles to their performance limits in every way imaginable. From accelerating out of an off-camber curve to braking on a steep decline. It was the ideal test. And teacher. After three years of precision-tuning—winning its class in the 2010 Nürburgring 24 Hours along the way—the first of 500 LFAs was released to the public. Its impact on Lexus would be felt for generations. Its impact at the Nürburgring would be felt instantly: In August 2011, test driver Akira Iida lapped the famed course in just over 7 minutes, 14 seconds—beating the record for a production car on noncompetition tires by a full six seconds.

Though few will ever be able to drive the LFA, many will still be able to feel it. In the way a Lexus performance sedan connects to the road courtesy of lightweight, high-rigidity body-bonding techniques introduced on the LFA. In the thrilling growl of a Lexus engine revving to high rpm. And in the handling and reassuring control of an innovative Vehicle Dynamics Integrated Management (VDIM)<sup>2</sup> system similar to that found on Iida's LFA during his record-setting lap.

Ultimately, there's no greater tribute to the LFA's role in Lexus performance than the two high-performance F marques it produced. The high-performance IS F was developed simultaneously with the LFA, incorporating a Nürburgring-tuned suspension and launching the F Line. The line of vehicles wearing the F SPORT<sup>3</sup> marque, now six models strong, all boast suspensions tuned by the same team behind the LFA. The LS F SPORT offers a limited-slip rear differential like the IS F and the LFA. And that exclusive digital gauge in the IS F SPORT? You'd be hard-pressed to find a difference between that and the one in the LFA supercar. Even current owners can benefit from LFA-inspired performance: Lexus engineers developed a line of track-proven F SPORT Accessories<sup>3</sup> to take the performance of many Lexus vehicles to the next level.

So, returning to the original question: Could it be done? Could a company with a reputation for shaking up the industry do it again among a field of world-renowned supercars that had been developed over the last century? Don't take our word for it. Just turn the page.



*“THE BEST CAR  
I’VE EVER DRIVEN”*

*–Jeremy Clarkson of Top Gear*



**THE F SPORT MODELS**

Infused with the DNA of the world-renowned LFA supercar and equipped with exclusive performance features and aggressive styling inside and out, Lexus F SPORT vehicles are engineered for the true driving enthusiast.

LS F SPORT



GS F SPORT



IS F SPORT



ISC F SPORT



CT F SPORT



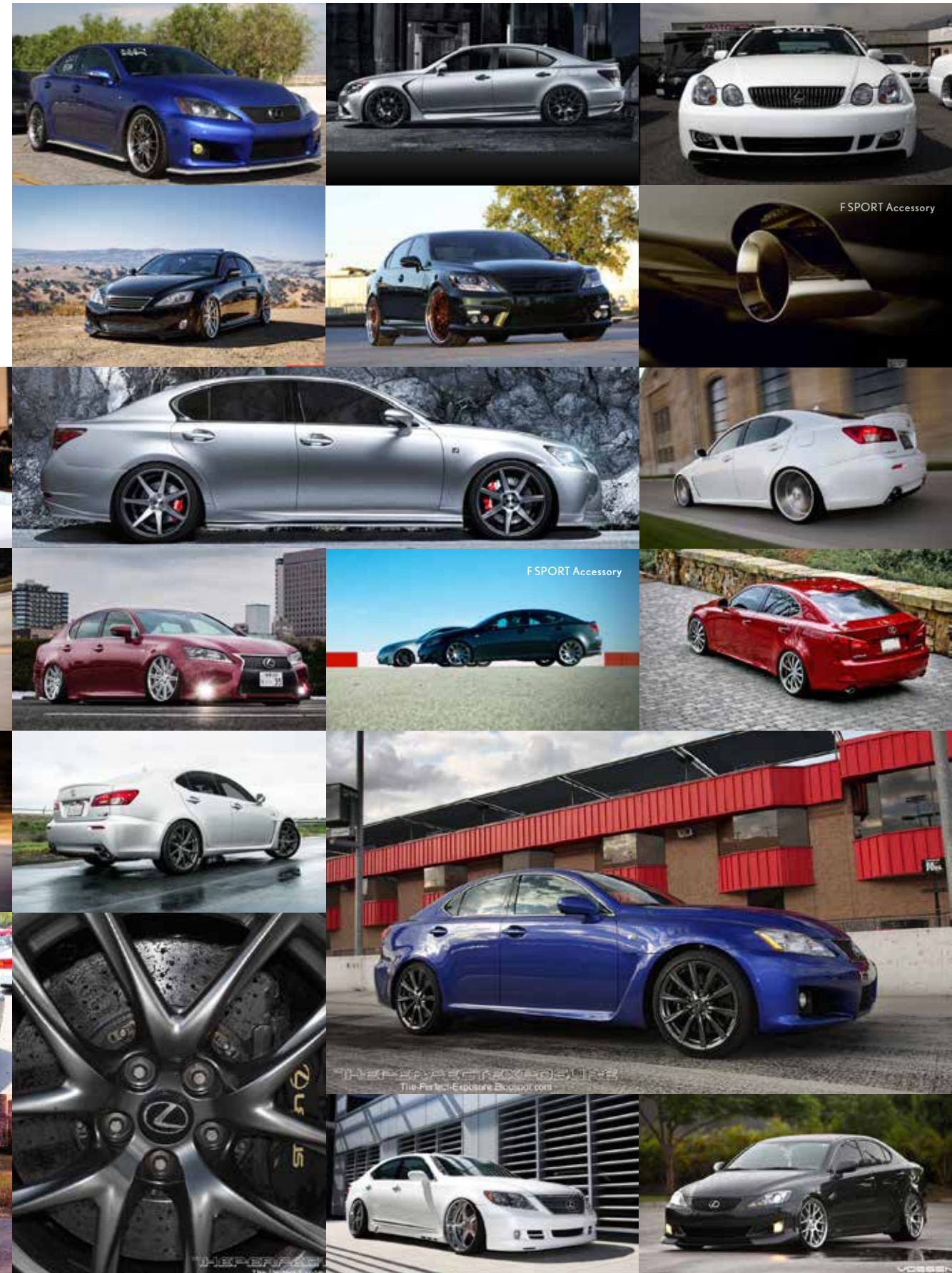
RX F SPORT



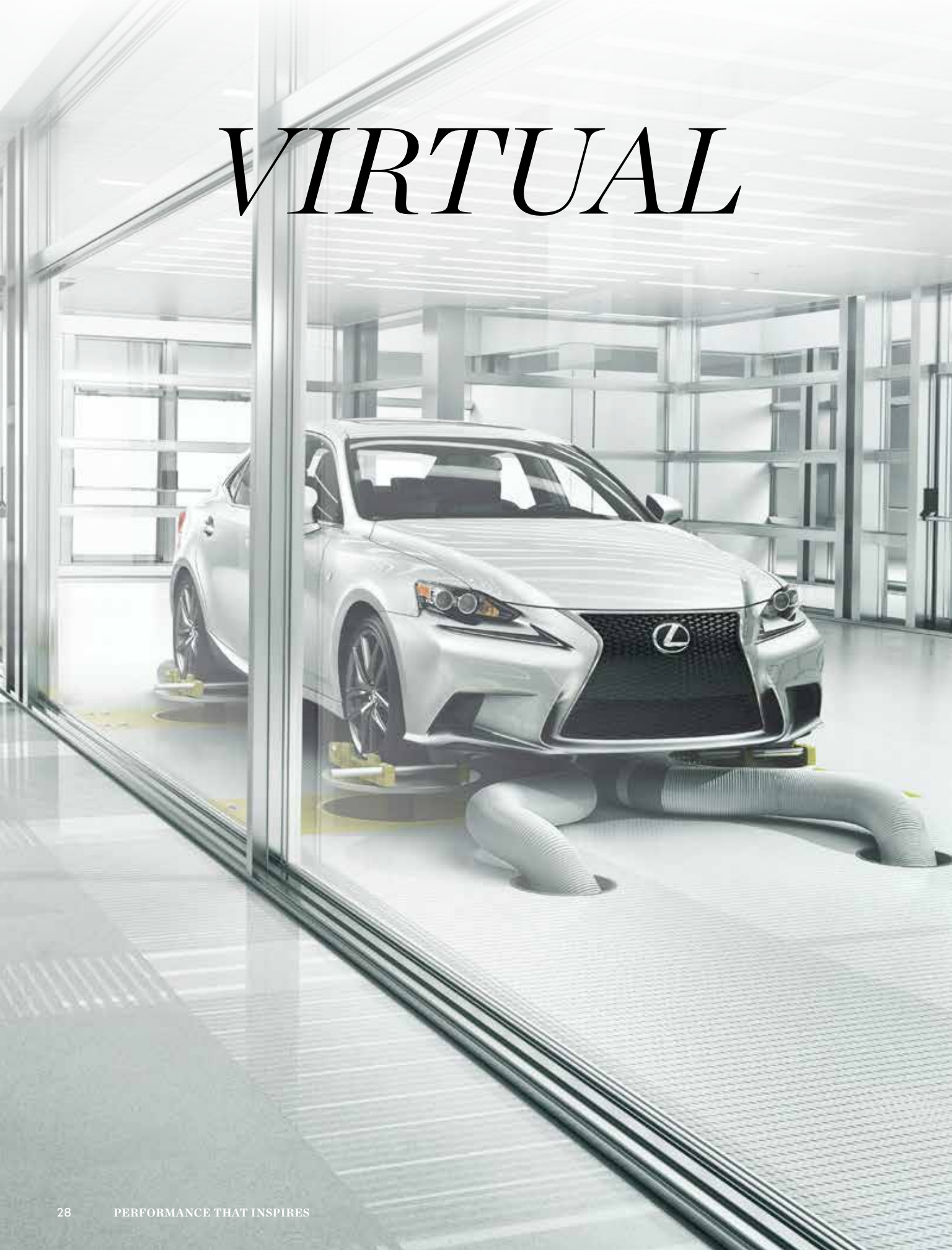
# ONE SIZE FITS NONE

FINDING EVEN MORE WAYS TO STAND OUT FROM THE CROWD

While some see a Lexus that's brimming with performance, others see a starting point. They crave their own flavor of adrenaline. From aftermarket wheels and lowered suspensions to aero kits and custom paint jobs. As the first luxury automaker with an official display at SEMA—one of the world's largest automotive-performance trade shows—it's not only a level of passion that we celebrate, it's one that we share. In fact, it was this desire for customized performance and aggressive styling that led us to create a line of F SPORT Accessories.<sup>3</sup> In addition to their bold appearance, these direct-replacement, track-tested components help provide select models with more responsiveness, greater agility or both. And, because they're engineered to our highest standards, they offer full warranty coverage.



# VIRTUAL



# REALITY



## THE INNOVATIVE VIRTUAL AND REAL-WORLD TRACK-TESTING PROCESS OF LEXUS PERFORMANCE VEHICLES //

Whether it's the world-renowned Fuji Speedway in Japan or the most famous proving grounds in Germany, the more time you spend track-testing and tuning a vehicle, the more exhilarating the result. By digitally mapping every curve and contour of tracks around the world, we use four-post hydraulic systems to simulate laps on real vehicles 24 hours a day. And then, after a week of adjustments, we take the most important step of all: A vehicle tuned to the exact specifications is taken to the actual tracks, where a driver verifies the thrilling result firsthand.





LFA shown.

## ALL-WEATHER DRIVE

WEATHER IS UNPREDICTABLE. WITH ALL-WHEEL DRIVE, YOUR ENJOYMENT DOESN'T HAVE TO BE.

Don't let foul weather spoil a good mood. Available all-wheel drive helps provide enhanced control on a wide range of road surfaces and conditions by automatically allocating engine power between the front and rear axles. In fact, the system offered on the RX350 is so innovative that under normal driving conditions, 100% of the power is sent to the front wheels for optimal efficiency. Should a series of sensors detect a change in conditions, the system can instantly send up to 50% of the power to the rear wheels to help maintain traction.

---

MODELS AVAILABLE WITH AWD  
LSH // LS // GS // IS // RX // RXh

---

MODELS WITH FULL-TIME 4WD  
GX // LX

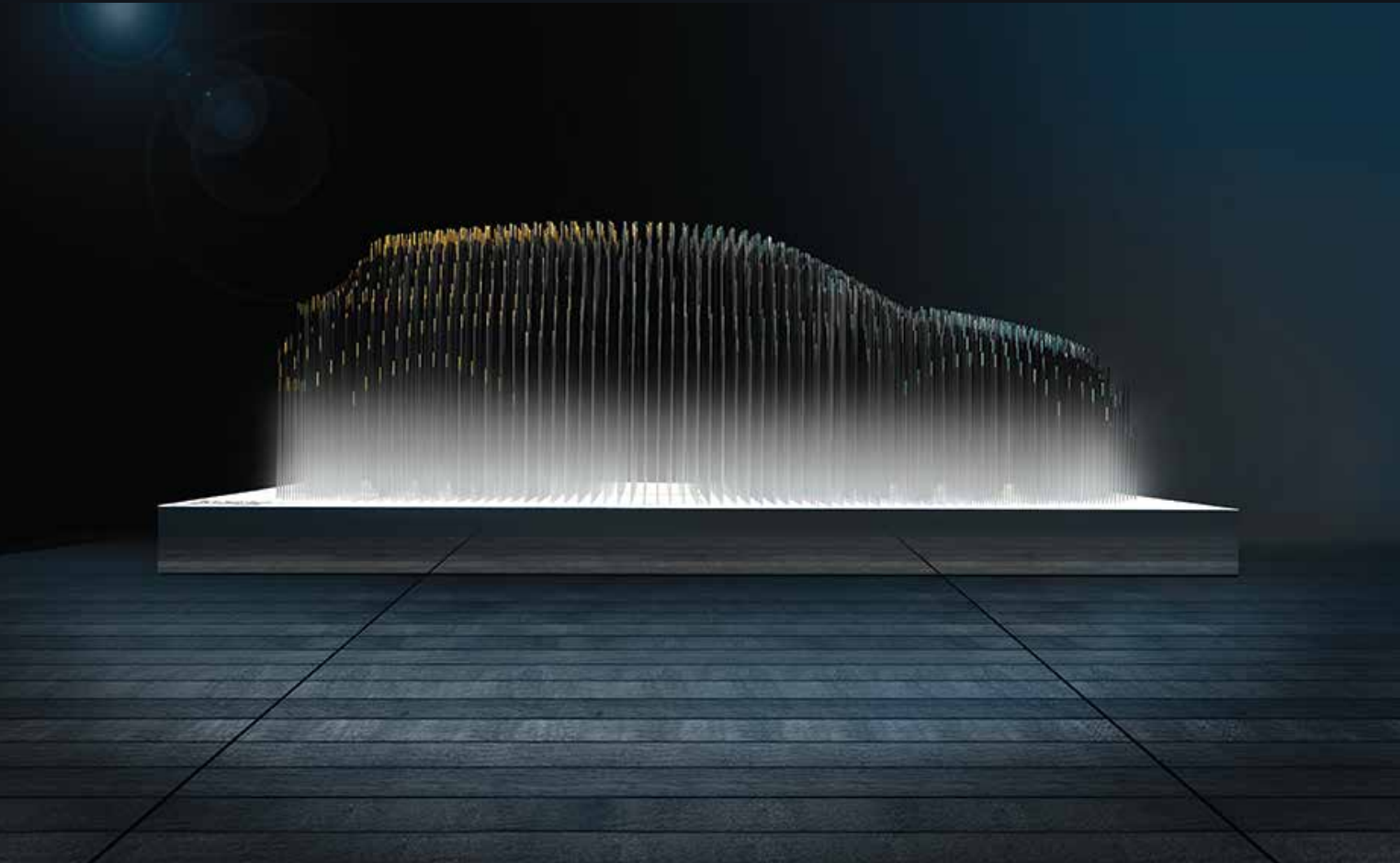
---





# DIAMOND IN THE ROUGH

It's the most punishing off-road race in North America. Spanning approximately 1,000 miles and requiring hours of continuous driving over challenging terrain, the Baja 1000 demands so much from vehicles, oftentimes half don't even finish. Understandably, the first time many entrants see Joe Bacal and his team of codrivers arrive in a utility vehicle donning a Lexus emblem and an interior trimmed in full-grain leather and mahogany, they're a bit skeptical. What they might not realize is that the LX, an icon of civility, with its spacious seating for eight and well-appointed interior, is as capable as it is comfortable. Innovative features like Crawl Control<sup>5</sup> and Multi-Terrain Select are designed to conquer obstacles with ease. While its massive V8 and full-time 4WD are up to any challenge. Even winning the Stock Full class in the Baja 1000. Which it's now done twice in three years.



As a pioneer of hybrid vehicles, Lexus is at the forefront of the movement toward sustainability. This installation, titled CT Umbra, was part of a traveling environmental discussion series hosted by Lexus.

3

## CREATING THE UNEXPECTED



Whether it's inventing the next category of vehicles, developing safety technology or finding new ways to amaze drivers, we don't just look to the future. We shape it.

*LEXUS HYBRID DRIVE TECHNOLOGY:  
DESIGNED TO OPTIMIZE ANY TYPE OF FUEL.  
EVEN THOSE THAT DON'T EXIST YET.*

WHILE NOBODY CAN PREDICT THE FUEL OF THE FUTURE,  
WITH LEXUS HYBRID TECHNOLOGY, WE CAN CONTROL  
HOW IT WILL BE USED.

While most vehicles today are powered by gasoline, nobody can say for certain what the fuel of tomorrow will be. It may be ethanol, hydrogen, even fuel made from algae. Which is why we decided decades ago to ask a different question: What if we could develop a system so adaptable it wouldn't even matter?

The result, Lexus Hybrid Drive, is a platform designed to optimize any type of power source in the future, regardless of the fuel. By combining and reallocating power from the battery-powered electric motor, regenerative braking system and engine, the system is designed to deliver instantaneous power when you need it while recharging the battery when you don't.

Of course, its benefits go well beyond its future-proof design. Many Lexus Hybrids are among the most fuel-efficient vehicles in the industry.<sup>6</sup> And, unlike other vehicles that have followed in our footsteps, our hybrids have nearly the same mpg ratings on the highway as they do in the city.

Exhilarating performance. Exceptional fuel efficiency. And Certified Super Ultra-Low Emission Vehicle (SULEV II) status. All with the craftsmanship, cutting-edge design and driver-inspired innovations that are synonymous with the Lexus name. This is technology that fuels the imagination. This is Lexus Hybrid Drive. —





**THE HYBRID MODELS**

Lexus introduced the world's first luxury hybrid more than eight years ago. Now, with more than 87% of all luxury hybrids on the road today and six generations of hybrid technology behind us, the 2014 line of Lexus Hybrids is set to push the category forward once again.

**LS HYBRID**



**GS HYBRID**



**ES HYBRID**



**CT HYBRID**



**RX HYBRID**



# WITHOUT A SCRATCH

BEFORE YOU GET INTO YOUR NEXT LUXURY VEHICLE,  
CONSIDER ONE MAN'S STORY OF GETTING OUT OF HIS.

---

*“At 10:27 a.m. on Wednesday, October 26, my LS 460 was blindsided by an 18-ton truck traveling at 70 mph. It left no skid marks at the scene. The impact tore the entire front left-wheel assembly off my Lexus, sending it more than 250 yards away, and spun the vehicle into the truck, crushing the rear. Fortunately, the entire cabin was left intact and I walked away without a scratch. Shortly after, I called my Lexus dealer and said, ‘**Naturally, I want the same car this time around.**’” — Four-time Lexus owner, Oklahoma*

---

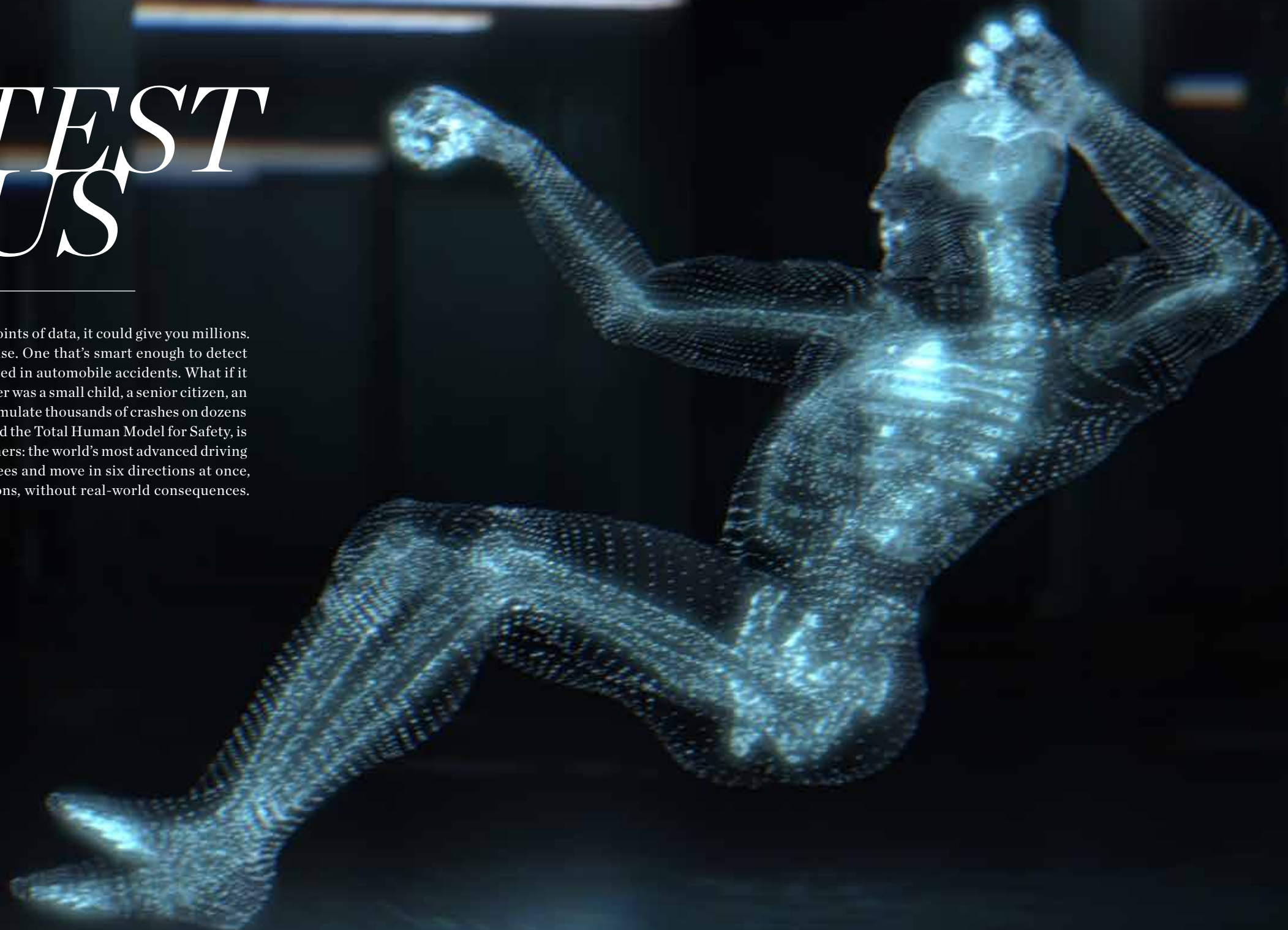
The best way to survive an accident is to avoid one altogether. Which is why Lexus offers some of the most advanced Active Safety systems on the road today. However, should the unthinkable become unavoidable, we've accounted for that, too. Of the thousands of virtual crash tests and countless actual crash tests we've conducted, many are focused exclusively on helping the cabin resist crash forces in a myriad of scenarios. As a result, Lexus vehicles are designed with everything from impact-dispersing reinforcements to energy-absorbing crumple zones to help distribute impact force.



# CRASH TEST GENIUS

x

Imagine a crash test dummy so brilliant that instead of the typical 119 points of data, it could give you millions. Enough to know the difference between a small scrape and a deep bruise. One that's smart enough to detect damage to internal organs, which account for half of all injuries sustained in automobile accidents. What if it was so advanced it could tell you how injuries would differ if the passenger was a small child, a senior citizen, an overweight man or a pregnant woman? And imagine you could use it to simulate thousands of crashes on dozens of subjects before you ever built a single vehicle. This digital model, called the Total Human Model for Safety, is just one of the ways Lexus is leading the industry in safety. Among the others: the world's most advanced driving simulator. Able to reach speeds of 50 miles per hour, tilt up to 30 degrees and move in six directions at once, it enables us to study real-world drivers reacting to real-world situations, without real-world consequences.





# POWER OF TEN



**MASANORI SUZUKI**  
Master of Vehicle Bodies  
31 years of experience



**KIMIHIRO SAKAKIBARA**  
Master of Paint  
32 years of experience



**MITSUKI YOSHIMURA**  
Master of Engine Casting  
35 years of experience



**HIDEYA SEGAWA**  
Master of Vehicle Inspections  
35 years of experience



**ATSUNOBU WATANABE**  
Master of Engine Assembly  
27 years of experience



**EIJI GOTO**  
Master of Engine Parts  
37 years of experience



**KATSUHIRO YAMAZAKI**  
Master of Vehicle Assembly  
31 years of experience



**YOSHIO MATSUI**  
Master of Body Stamping  
32 years of experience



**YASUNORI MIYAMOTO**  
Master of Plastic Painting  
29 years of experience



**HIROFUMI KOGA**  
Master of Plastic Molding  
36 years of experience

## THE MASTER CRAFTSMEN WHO MAKE A LEXUS A LEXUS

There is no higher honor within the engineering ranks of Lexus than a *Takumi*, or Master Craftsman. Each is hand-selected for performing their craft more skillfully and artfully than the rest. Tasked with training and instilling pride in the thousands of engineers beneath them, this elite group of ten oversees every aspect of development at the Tahara plant.

They think in terms of microns. Their margin for error, even less. Though Hirofumi Koga has a specially calibrated machine designed to identify imperfections in the dash, he prefers to use a far more reliable tool: By running his gloved hand over the surface, he can detect less than a millimeter of difference in the uniformity of the foam underneath. And he requires his team members be able to do the same. Eiji Goto has similarly impossible standards when it comes to scrutinizing engine parts. His team members must memorize a list of 250 points to inspect. Sound daunting? That's only for one piece. These are just two of the 26,000 tasks you'll find in a Lexus plant. Each must be precisely demonstrated and described in exacting detail by a craftsman to receive certification. How much detail? Consider this: There's a 14-minute film on how to place a grommet correctly—a task that takes a mere two seconds.

# ARTISTRY MEETS AUTOMATION

TO CREATE THE UNPARALLELED FINISH  
OF A LEXUS, ROBOTS WERE TAUGHT BY  
THE MASTER PAINTER HIMSELF.



A painter with decades of experience, who's learned the precise hand motion, speed and pattern to apply a finish evenly on the surface and around every edge of a panel, only comes around once in a lifetime. Except in this case. By mapping the exact motions of arguably the most gifted automotive painter in the world, robots are able to duplicate the flawless technique on every Lexus vehicle.

# EVEN WHEN WE'RE FINISHED, WE'RE ONLY BEGINNING.

RAISING THE AUTOMOTIVE BAR ONE METHODICAL PIECE AT A TIME.

When the LS was introduced, it changed the industry. Decades of world's firsts and countless awards later, it's considered by many to be the finest vehicle in the world. So how do you improve upon the impossible standard you've set? Piece by methodical piece. Scrutinize every aspect of the driving experience in search of new ways to surprise and inspire those inside.

Even if it means reinventing the wheel. Which, among the 3,000 enhancements made to the current-generation LS, including the introduction of the exhilarating LS F SPORT, is exactly what we did. In order to let drivers focus on the sounds they desire—a perfectly tuned engine note or the three-dimensional sound of music—we modified the design of the available 19-inch split-seven-spoke wheel's<sup>7</sup> outer rim to absorb significantly more road noise.



# IT'S NOT A STUDY OF AUTOMOTIVE DESIGN // IT'S A STUDY OF PEOPLE.

CRAFTING THE IDEAL DRIVING EXPERIENCE, ONE MILLIMETER AT A TIME

When a car is designed for the senses and not the status quo, you don't just sit in a vehicle. You become one with it. Controls are positioned where your hands naturally rest. With the available Heads-up Display, simple navigation instructions can appear to float six feet in front of the vehicle. And, though you may have sat in dozens of driver's seats, there's a feeling that somehow this one is different. For good reason: It is.

Take the GS. To create the ideal seating position, Lexus spent five and a half years collaborating with a university research team, studying everything from skeletal angles to high-end office chairs. The result of these findings is an ergonomic breakthrough. Embracing the driver and front-seat passenger, the power front seats in the GS Luxury Package offer 18 different types of customization, including shoulder support, butterfly headrest and variable seat cushion length.

The angle of the steering wheel in the GS was modified by two degrees from the previous generation's to more naturally align with the angle of a driver's wrists when using the paddle shifters. The cross-section shape of the steering wheel varies around the circumference to better match the shape of your palm, wherever it's placed. And, in the LS F SPORT, you sit nearly a half inch closer to the ground so you'll feel even more connected to the road.

It's the kind of attention to detail—and to the senses—that can't be left to consensus. Which is why the task of creating the optimal driving environment for every Lexus is ultimately decided by one person. A man so focused on achieving a feeling in which the driver and vehicle move effortlessly as one, it's no wonder he doesn't look to other automobiles. A 25-year surf veteran who shapes surfboards by hand, master craftsman Shuichi Ozaki finds his inspiration elsewhere.



**SIGHT**  
\\sit\\



**HEADS-UP DISPLAY\***  
Key information within your line of sight  
– GS, RX –



**LFA-INSPIRED GAUGES\***  
Programmable shift light illuminates at preset RPM  
– IS –



**12.3-INCH DISPLAY\***  
High-resolution with split-screen functionality  
– GS, LS –



**FEEL**  
\\fēl\\



**STEERING WHEEL CONTROLS**  
Audio, display and Bluetooth®<sup>8</sup> phone controls  
– ALL MODELS –



**REMOTE TOUCH™<sup>9</sup>**  
Fingertip control enables access to features  
– CT, ES, GS, IS, LS, RX –



**PADDLE SHIFTERS\***  
Race-inspired design lets you change gears manually  
– GS, IS, IS C, IS F, LS, RX –



**FIT**  
\\'fit\\



**BOLSTERED SPORT SEATS\***  
Added support helps keep you firmly planted in turns  
– CT, GS, IS, IS F, LS –



**ADJUSTABLE THIGH EXTENSION\***  
Driver's seat cushion extends for added support  
– ES, GS, RX –



**16-WAY SPORT SEAT\***  
Power bolsters, four-way lumbar and more  
– GS –



# *PITCH*

Walt Disney Concert Hall has arguably the finest acoustics of any concert hall in the world. Not surprisingly, it was tuned by a team using the most accurate sound-testing software in the world. What may come as a surprise is that this same team also used their proprietary software to tune the Mark Levinson® Audio Systems<sup>10</sup> to the specifications of every Lexus cabin they're offered in.



# *PERFECT*

Offering a 19-speaker Mark Levinson Reference Surround Sound Audio System,<sup>10</sup> the LS is an acoustic triumph in its own right. To overcome the challenging acoustics of an automobile interior and deliver a level of sound quality once considered unattainable, engineers spent thousands of hours developing the system—even longer than it took with the iconic Walt Disney Concert Hall itself.

# A NAVIGATION SYSTEM THAT'S POWERED BY THE MOST ADVANCED COMPUTER IN THE WORLD: A HUMAN BEING.

For those who have grown tired of pulling over to manually search for points of interest or having a smartphone consistently bungle basic voice commands, an ingeniously simple alternative: Just ask. With available Destination Assist, a press of a button gives you 24-hour en route access to a live response center agent.

Agents can search local points of interest using the most current listings, even helping you narrow restaurant choices by distance and cuisine. And, once you've decided, the agent can send up to five destinations at a time wirelessly to your vehicle's Navigation System<sup>11</sup> for convenient turn-by-turn directions.

**Q. WHERE'S A GOOD PLACE FOR SUSHI IN THIS CITY?**

A. I CAN SEND YOU THE FIVE CLOSEST SUSHI BARS, IF YOU'D LIKE. THERE'S ONE THAT'S ONLY A COUPLE OF BLOCKS AWAY.

**Q. CAN YOU LOOK UP THE PHONE NUMBER OF OUR HOTEL?**

A. I'D BE HAPPY TO SEND THE NUMBER TO YOUR SYSTEM RIGHT NOW, SO YOU WON'T NEED TO TYPE IT IN. DO YOU KNOW THE NAME, OR CAN I HELP YOU FIND IT?

**Q. HOW DO I GET TO THAT NEW CLUB ON 55TH?**

A. I SEE A CLUB THAT JUST OPENED A COUPLE OF WEEKS AGO ON 55TH. SHOULD I SEND THE DIRECTIONS?

# WHEN CREATING A MORE SUSTAINABLE VEHICLE, THE RIGHT INGREDIENTS MAKE ALL THE DIFFERENCE.



*Corn*



*Bamboo*



*Kenaf Fiber*



*Sugar*



*CT*

While the spindle grille and sculpted lines of a Lexus may turn heads, we believe that the most important impression is the one not left. Which is why many of the materials you'll find in a Lexus are as groundbreaking as they are unconventional. Like seat foam derived from soybeans, carpeting in cargo areas made from sugarcane, and interior plastics sourced from sweet potatoes and corn. You'll also find door trims made with kenaf—a grass plant that grows faster and absorbs up to five times more carbon than timber. And the world's first bamboo-trimmed steering wheel isn't the only place you'll find this stunning, sustainable wood. It's also a key ingredient in the speakers found in the CT, a vehicle that's 90% recyclable<sup>12</sup> in its own right.

The use of plant-based materials is just one of the ways we've been at the forefront of sustainable design. Most Lexus vehicles also feature seating trimmed in supple Lexus NuLuxe, an innovative material that is lighter than genuine leather and whose manufacturing process generates no VOCs and 65% fewer CO<sub>2</sub> emissions. Every Lexus manufacturing site has Zero Landfill status, meaning that any waste resulting from manufacture is repurposed or used to generate additional energy. And to ensure Lexus vehicles aren't the only ones on the road with a reduced carbon footprint, we developed an infinitely recyclable plastic more than two decades ago and shared the proprietary formula with all auto manufacturers.



*INTRODUCING THE LEXUS DELIVERY AND TECHNOLOGY SPECIALISTS. NOW, FACE-TO-FACE ANSWERS ALSO COME STANDARD.*

Lexus vehicles are filled with state-of-the-art technology to make driving more fun, more efficient and, in some cases, to give you greater peace of mind. Of course, this technology is only as remarkable as it is understandable. So, to help you get the most out of your new Lexus, a Vehicle Delivery Specialist will walk you through nearly every feature, setting and function you desire—from setting up the available Enform<sup>13</sup> system to using the coat hooks. It's a service so many of our customers appreciate, it's not surprising one of our current owners went on to become a specialist himself.

We also understand that some questions arise only after you've had a chance to use some of the technology. For that reason, every Lexus dealership also has a Vehicle Technology Specialist to answer questions and provide hands-on help. Don't have the time to drive to the dealership for a tutorial? Using camera-enabled iPad<sup>®14</sup> apps like FaceTime,<sup>15</sup> a specialist can offer expert guidance without you ever leaving the driveway.





# LEXUS INNOVATIONS AREN'T ONLY FOUND IN A LEXUS.

FINDING NEW WAYS TO ENHANCE THE DEALERSHIP EXPERIENCE



Just as the inspiration for our vehicles' designs comes from unexpected places, our dealers don't look to the automotive world for answers. They never have. Of the many qualifications we require of a dealer before they can become a Lexus dealer, the first is to adhere to a covenant written before the first Lexus was ever built. An essential part of this covenant: "Treat each customer as we would a guest in our home."

Whether it's using complimentary Wi-Fi or helping yourself to a beverage, we're truly honored when you make yourself at home. And, if you need assistance, we'll go to great lengths to ensure your expectations aren't merely met, but exceeded. From complimentary loaner vehicles to the storage of seasonal tires in the off-season. There's a reason Lexus is continually rated highest in customer service year after year: The Lexus Covenant isn't just a promise that we make, it's a promise that we keep.

# THE LEXUS KEY FOB OPENS MORE THAN YOU THINK.

---

EXCLUSIVE  
BENEFITS FROM  
PARTNER HOTELS,  
WINERIES AND  
MORE: JUST PART  
OF WHAT MAKES  
OWNING A LEXUS  
SO REWARDING

---



## TRAVEL

The travel advantages of being a Lexus owner may begin with the drive to your destination, but they also continue once you arrive. Through arrangements with some of the most prestigious resorts and boutique hotels in the country—including the Post Ranch Inn on the California coast and Blackberry Farm in Tennessee—Lexus owners are offered a variety of exclusive benefits. Whether it's a complimentary four-course dinner for two or a \$100 credit to be applied toward many of a resort's most popular amenities, the Lexus ownership experience is as special as the vehicles themselves.

## FOOD AND WINE

Captivating style and a flair for the unexpected aren't only characteristics of Lexus vehicles. We've partnered with a select number of restaurants across the country, each of which offers an innovative approach to the culinary experience, to provide Lexus owners with benefits including complimentary desserts and exclusive visits by the chef. Should you find yourself in Northern California, especially, we've partnered with the prestigious Napa Valley Vintners. As a result, Lexus owners are given VIP treatment at 76 of Napa Valley's finest wineries. Specific benefits vary from waived fees and complimentary shipping to exclusive reserve tastings, personal cellar tours and private picnics overlooking the valley.

## SPORTS

Select sporting venues may also provide Lexus owners with VIP access to Lexus clubs and lounges as well as offer merchandise discounts. And,

for those looking to polish their golf game, you'll enjoy an exclusive benefit at the ANNIKA™ Academy—a state-of-the-art golf academy founded by Hall of Fame golfer Annika Sörenstam. Located in the prestigious Reunion® Resort in Florida, The ANNIKA Academy is a Certified Callaway® Performance Center that provides private golf instruction, personalized fitness and nutrition programs and offers guests everything from one-hour lessons to three-day programs that include a once-in-a-lifetime opportunity to play nine holes with the legend herself.

## RETAILERS

Lexus owners also receive exclusive savings from high-end retailers. From outdoor furniture for your next cocktail party to a dash of gourmet salt for your next dish, you'll find a variety of items for every taste and price range. For those who want to wear their Lexus ownership with pride, The Lexus Collection catalog offers a range of products showcasing the finest design and craftsmanship in the world. Style mavens will find everything from an LFA chronograph watch to handblown Murano glass vases. And, for the sports enthusiast, you'll find everything from sunglasses to composite drivers.

—  
*Learn more at [lexus.com/benefits](https://lexus.com/benefits).*





4

## 2014 MODELS



Performance that invigorates. Interiors designed to inspire. Innovation that connects as well as conquers. It's more than our latest line of vehicles. It's a new line, drawn.

# LS 14



**"A SMOOTH, CIVILIZED BEAST."**

—MAXIM (on the LS F SPORT), APRIL 10, 2013



## SELECT FEATURES

- Exclusive limited-slip rear differential (LS F SPORT RWD)
- 12.3-inch split-screen multimedia display
- Available four-zone Climate Concierge
- Exclusively available *Shimamoku* Espresso wood trim
- Available reclining rear seat with ottoman-style leg rest<sup>16,17</sup> and massager
- Available Advanced Pre-Collision System<sup>18</sup>

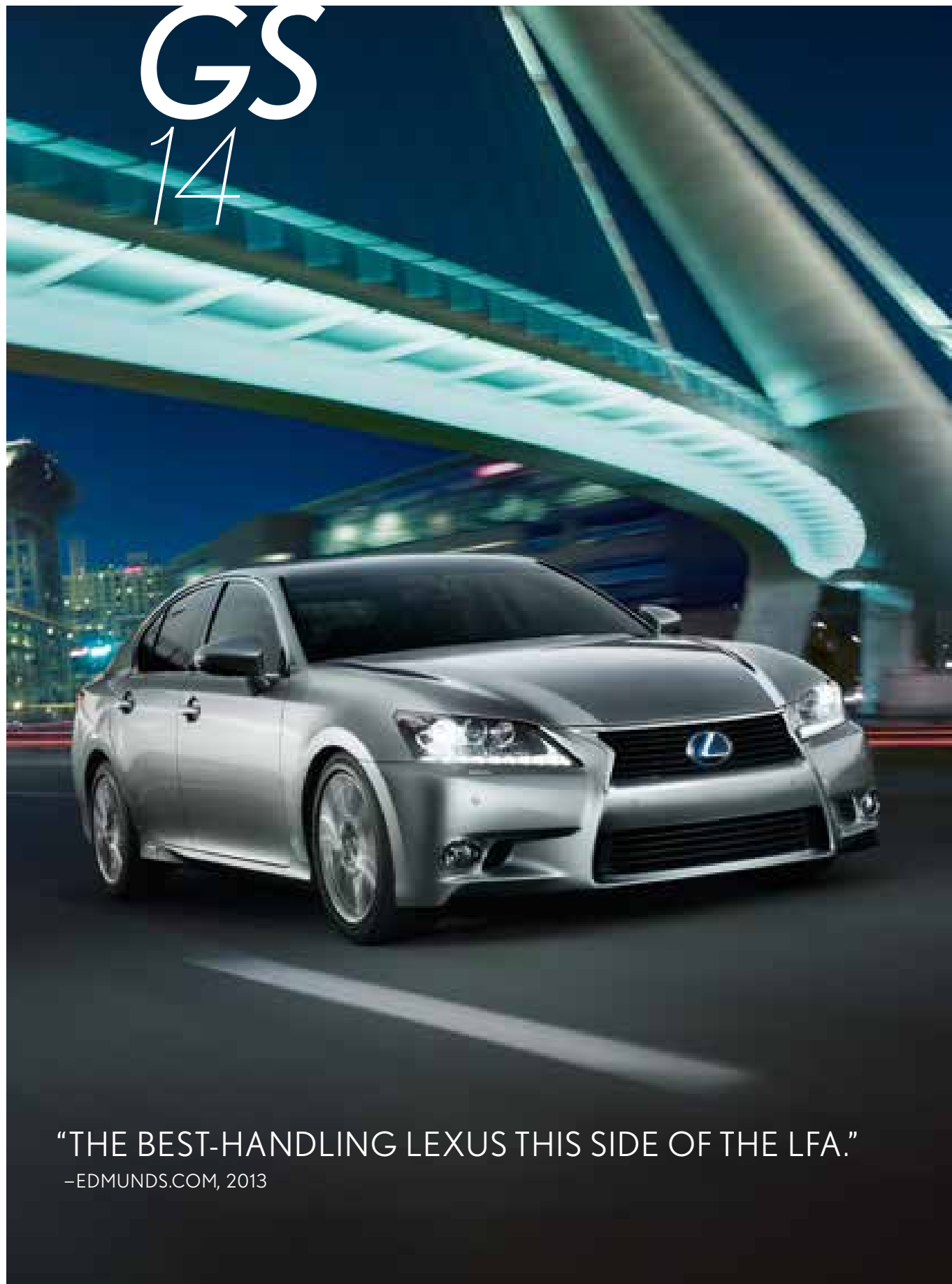


## KEY SPECS

386 <sup>HP1</sup> LS RWD / F SPORT RWD	360 <sup>HP1</sup> LS AWD / F SPORT AWD	438 <sup>TOTAL SYSTEM HP1</sup> LS <sup>h</sup> w/Lexus Hybrid Drive	RWD <small>OR</small> AWD STANDARD AVAILABLE LS / F SPORT STANDARD LS <sup>h</sup>
4.6L V8 ENGINE	4.6L V8 ENGINE	5.0L V8 ENGINE	DRIVETRAIN
16 / 24 / 19 <sup>19</sup> EST MPG LS RWD / F SPORT RWD	16 / 23 / 18 <sup>19</sup> EST MPG LS AWD / F SPORT AWD	19 / 23 / 20 <sup>19</sup> EST MPG LS <sup>h</sup>	
FUEL ECONOMY, EPA-ESTIMATED RATINGS (CITY / HIGHWAY / COMBINED)			
8-SPEED LS / F SPORT	ECVT LS <sup>h</sup>	0-60 IN 5.4s <sup>120</sup> LS RWD / F SPORT RWD	6.0s <sup>120</sup> LS AWD / F SPORT AWD
AUTOMATIC TRANSMISSION; F SPORT WITH PADDLE SHIFT		ELECTRONICALLY CONTROLLED CONTINUOUSLY VARIABLE TRANSMISSION	
		PERFORMANCE	
		5.6s <sup>120</sup> LS <sup>h</sup>	

**MODELS** LS 460 // LS 460 L // LS 460 F SPORT // LS 600h L

# GS 14



“THE BEST-HANDLING LEXUS THIS SIDE OF THE LFA.”

—EDMUNDS.COM, 2013

## SELECT FEATURES

Exclusively available Dynamic Rear Steering (GS F SPORT RWD)

Sequential illumination with ambient interior lighting

Available 12.3-inch split-screen multimedia display with Lexus Enform<sup>13</sup>

Available 835-watt, 17-speaker Mark Levinson® Audio<sup>10</sup>

Available full-color Heads-up Display

Available Pre-Collision System<sup>21</sup>



## KEY SPECS

306<sup>HP1</sup>  
GS / F SPORT

338<sup>TOTAL SYSTEM HP1</sup>  
GS<sup>h</sup> w/Lexus Hybrid Drive

0-60 IN 5.7<sup>S120</sup> 5.8<sup>S120</sup> 5.6<sup>S120</sup>  
GS RWD / F SPORT RWD GS AWD / F SPORT AWD GS<sup>h</sup>

3.5L V6 ENGINE

3.5L V6 ATKINSON-CYCLE ENGINE

PERFORMANCE

19 / 29 / 23<sup>19</sup> EST MPG  
GS RWD / F SPORT RWD

19 / 26 / 21<sup>19</sup> EST MPG  
GS AWD / F SPORT AWD

29 / 34 / 31<sup>19</sup> EST MPG  
GS<sup>h</sup>

RWD OR AWD  
STANDARD AVAILABLE  
GS / F SPORT / GS<sup>h</sup> GS / F SPORT

FUEL ECONOMY, EPA-ESTIMATED RATINGS (CITY / HIGHWAY / COMBINED)

DRIVETRAIN

8-SPEED  
GS RWD / F SPORT RWD

6-SPEED  
GS AWD / F SPORT AWD

ECVT  
GS<sup>h</sup>

AUTOMATIC TRANSMISSION WITH PADDLE SHIFT

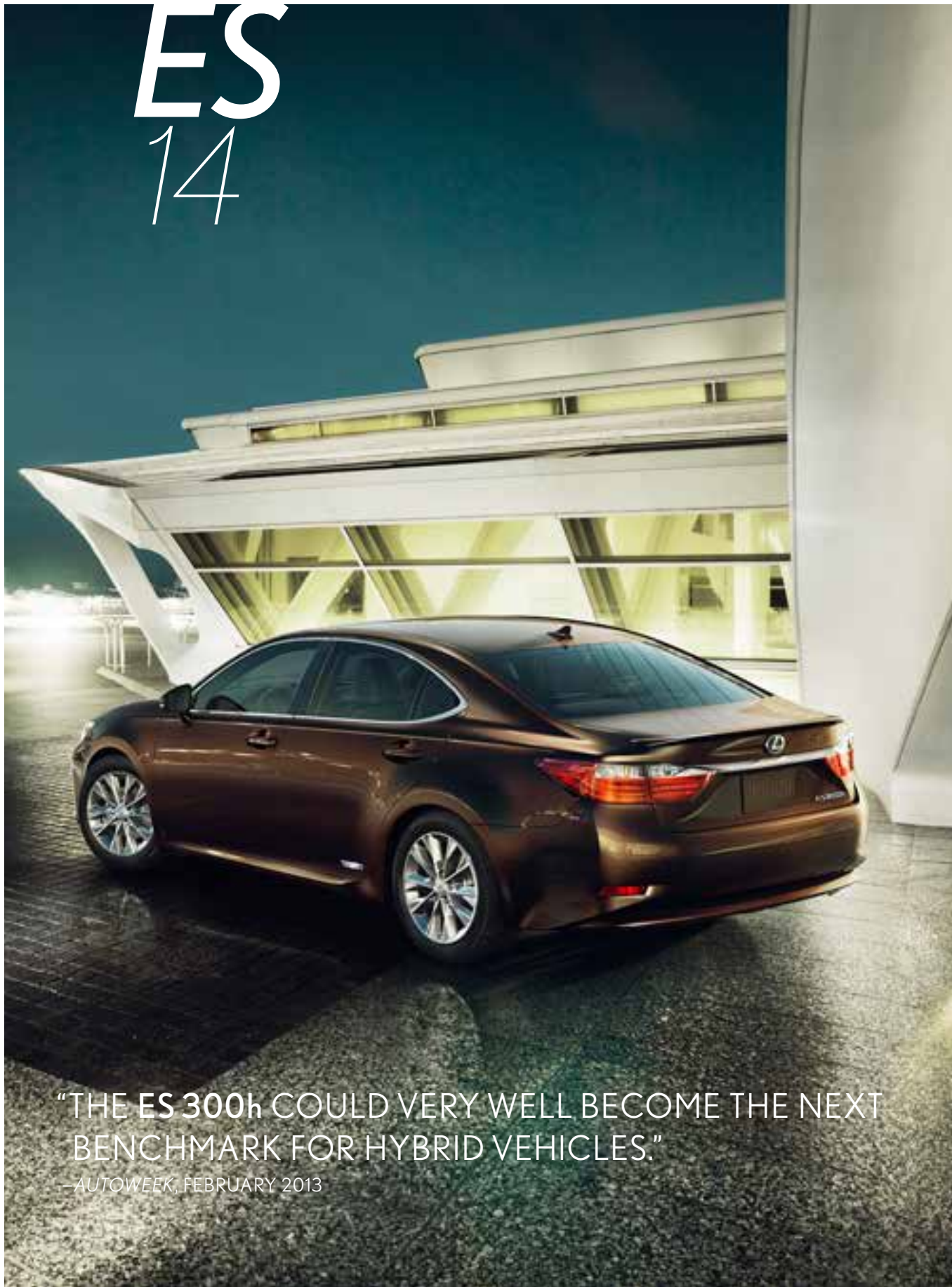
AUTOMATIC TRANSMISSION WITH PADDLE SHIFT

ELECTRONICALLY CONTROLLED CONTINUOUSLY VARIABLE TRANSMISSION

## MODELS

GS350 // GS350 F SPORT // GS450h

# ES 14



“THE ES 300h COULD VERY WELL BECOME THE NEXT BENCHMARK FOR HYBRID VEHICLES.”

—AUTOWEEK, FEBRUARY 2013

## SELECT FEATURES

- Exclusive panorama glass roof (available ES)
- Available sustainable bamboo interior trim
- Class-leading<sup>22</sup> 10 standard airbags<sup>23</sup>
- Class-leading rear-seat legroom
- Available 835-watt, 15-speaker Mark Levinson Audio<sup>10</sup>
- Drive Mode Select with ECO, Normal, Sport and EV<sup>24</sup> (ESh) modes



## KEY SPECS

268 <sup>HP</sup> ES	200 <sup>TOTAL SYSTEM HP</sup> ESh w/Lexus Hybrid Drive	0-60 IN 7.1s <sup>20</sup> ES	8.1s <sup>20</sup> ESh	FWD
3.5L V6 ENGINE	2.5L ATKINSON-CYCLE I-4 ENGINE	PERFORMANCE		DRIVETRAIN
21 / 31 / 24 <sup>19</sup> EST MPG ES	40 / 39 / 40 <sup>19</sup> EST MPG ESh	6-SPEED ES	ECVT ESh	
FUEL ECONOMY, EPA-ESTIMATED RATINGS (CITY / HIGHWAY / COMBINED)		AUTOMATIC TRANSMISSION		ELECTRONICALLY CONTROLLED CONTINUOUSLY VARIABLE TRANSMISSION

**MODELS** ES 350 // ES 300h

IS  
14



THE IS 350 F SPORT: CAR AND DRIVER'S TOP PICK OVER THE BMW 335i M SPORT AND THE CADILLAC ATS 3.6.

-CAR AND DRIVER, JUNE 2013



### SELECT FEATURES

- Available 835-watt, 15-speaker Mark Levinson Audio<sup>10</sup>
- Eight-speed Sport Direct-Shift transmission with paddle shifters (IS 350 RWD, IS 350 F SPORT RWD)
- Exclusive LFA-inspired gauges (IS F SPORT)
- Lexus display audio with subscription-free traffic and weather mapping information<sup>25</sup>
- Standard 60/40-split rear seat
- Exclusive electrostatic temperature controls



### KEY SPECS

204 <sup>HP1</sup> IS 250 / F SPORT	306 <sup>TOTAL SYSTEM HP1</sup> IS 350 / F SPORT	0-60 IN 7.7 <sup>s120</sup> IS 250 / F SPORT	8.3 <sup>s120</sup> IS 250 AWD / F SPORT AWD	5.6 <sup>s120</sup> IS 350 / F SPORT	5.7 <sup>s120</sup> IS 350 AWD / F SPORT AWD
--	---	--	---	---	---

2.5L V6 ENGINE      3.5L V6 ENGINE      PERFORMANCE

21 / 30 / 24 <sup>19</sup> EST MPG IS 250 RWD / F SPORT RWD	20 / 27 / 23 <sup>19</sup> EST MPG IS 250 AWD / F SPORT AWD	19 / 28 / 22 <sup>19</sup> EST MPG IS 350 RWD / F SPORT RWD	19 / 26 / 21 <sup>19</sup> EST MPG IS 350 AWD / F SPORT AWD
---	---	---	---

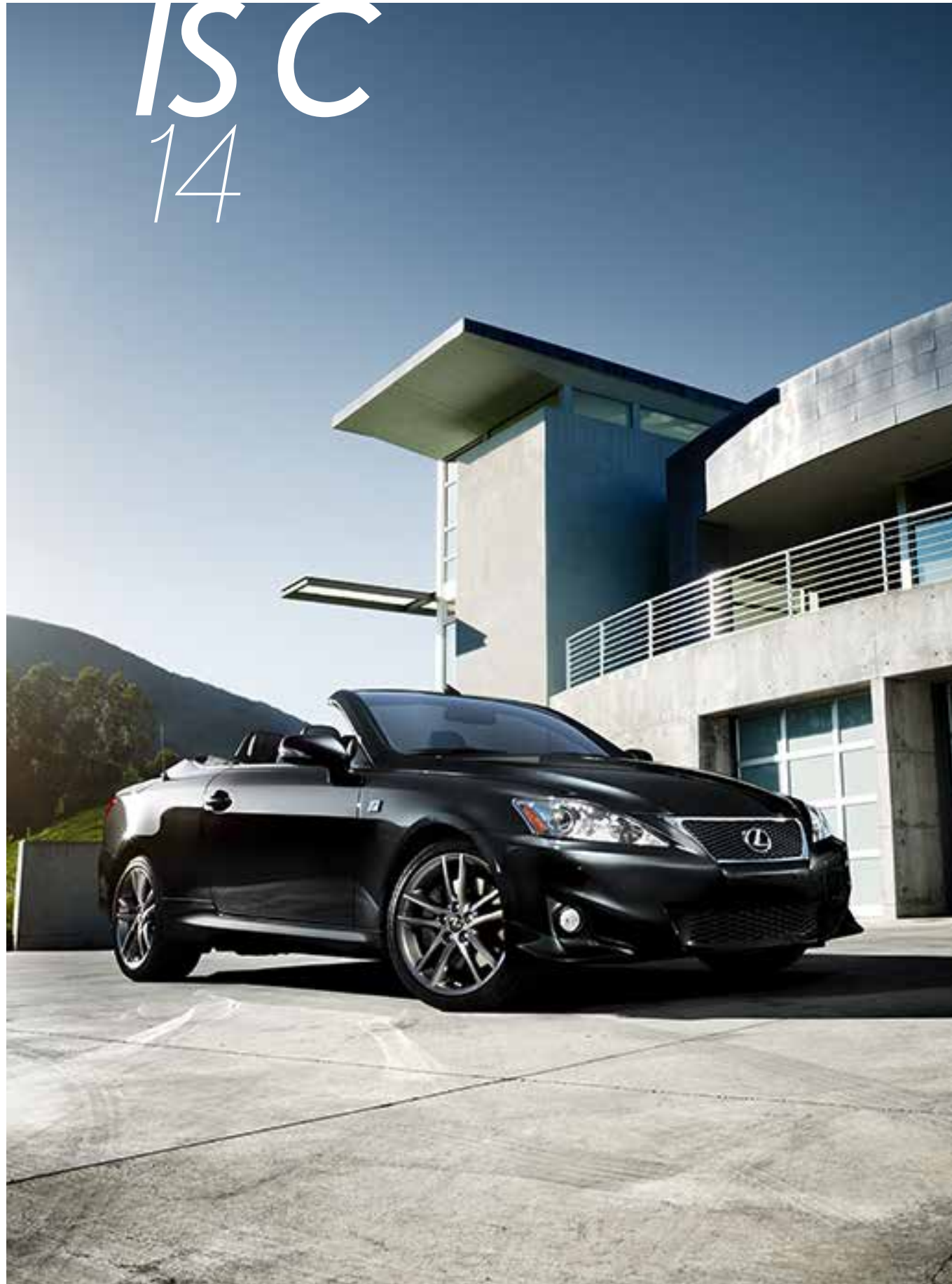
FUEL ECONOMY, EPA-ESTIMATED RATINGS (CITY / HIGHWAY / COMBINED)

6-SPEED IS 250 RWD, AWD / IS 350 AWD / F SPORT AWD	8-SPEED IS 350 RWD / F SPORT RWD	RWD <u>OR</u> AWD STANDARD AVAILABLE
---	-------------------------------------	---

AUTOMATIC TRANSMISSION WITH PADDLE SHIFT      SPORT DIRECT-SHIFT AUTOMATIC TRANSMISSION WITH PADDLE SHIFT      DRIVETRAIN

MODELS IS 250/350 // IS 250/350 F SPORT

# ISC 14



## SELECT FEATURES

- Three-piece folding aluminum hardtop that retracts in about 20 seconds
- Audio and climate systems optimized for top-up/top-down motoring
- Leather interior trim with available Dark Gray or Espresso bird's-eye maple accents
- Available heated and ventilated front seats
- Available 12-speaker Mark Levinson audio system<sup>10</sup>
- Exclusive styling and suspension tuning (IS C F SPORT)



## KEY SPECS

204<sup>HP1</sup>  
IS 250 C / F SPORT

2.5L V6 ENGINE

306<sup>HP1</sup>  
IS 350 C / F SPORT

3.5L V6 ENGINE

0-60 IN 8.4<sup>s 120</sup>  
IS 250 C / F SPORT

PERFORMANCE

5.8<sup>s 120</sup>  
IS 350 C / F SPORT

6-SPEED  
IS C / F SPORT

AUTOMATIC TRANSMISSION WITH PADDLE SHIFT

RWD

DRIVETRAIN

21 / 30 / 24<sup>19</sup> EST  
MPG  
IS 250 C / F SPORT

FUEL ECONOMY, EPA-ESTIMATED RATINGS (CITY / HIGHWAY / COMBINED)

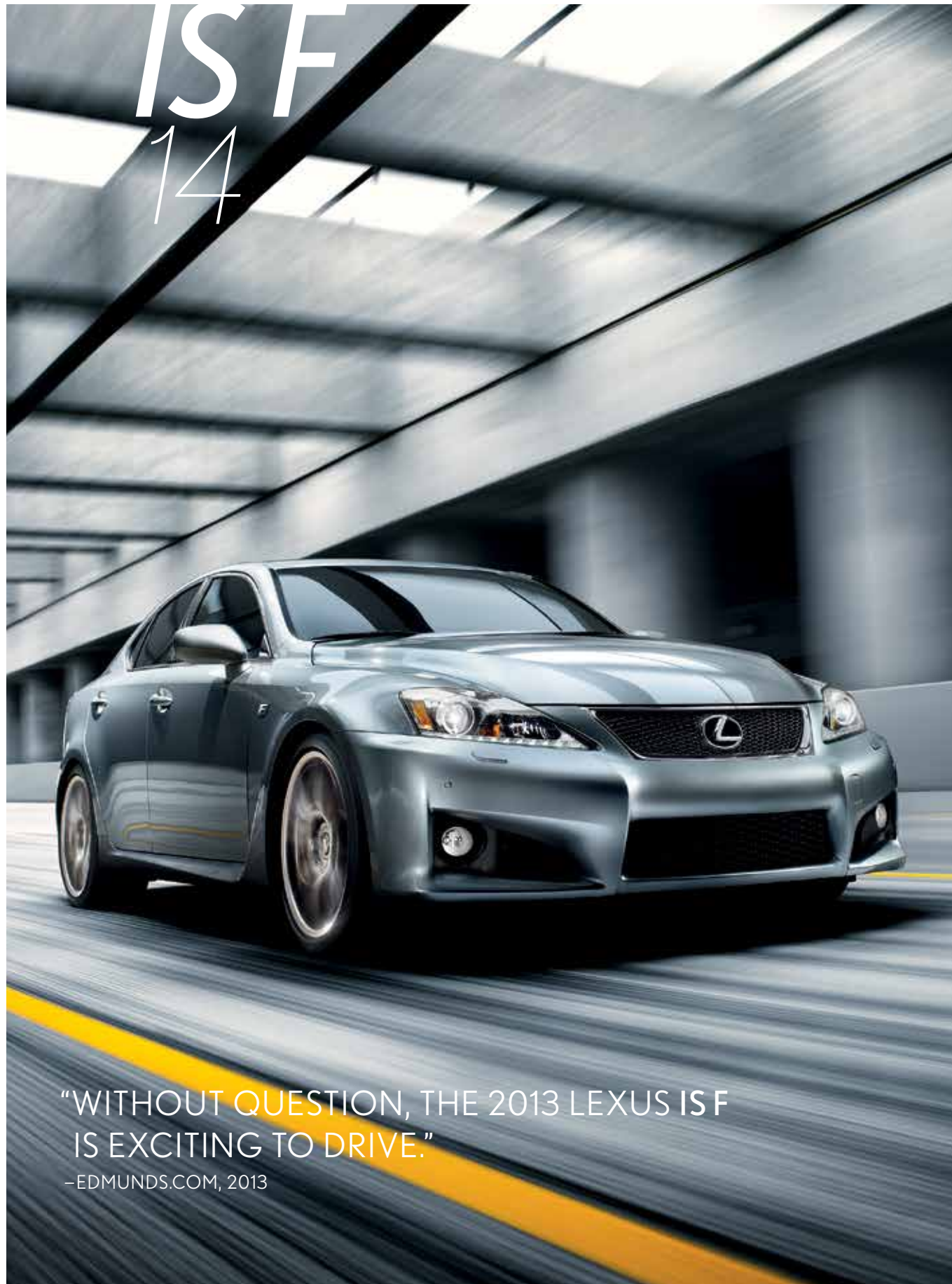
19 / 27 / 22<sup>19</sup> EST  
MPG  
IS 350 C / F SPORT

## MODELS

ISC 250/350 // ISC 250/350 F SPORT



# IS F 14



“WITHOUT QUESTION, THE 2013 LEXUS IS F IS EXCITING TO DRIVE.”

—EDMUNDS.COM, 2013



## SELECT FEATURES

- 416-hp<sup>1</sup> 5.0-liter V8 engine
- Eight-speed Sport Direct-Shift transmission with paddle shifters
- Exclusive Brembo<sup>®</sup> brakes<sup>26</sup> with six-piston front calipers
- 19-inch forged alloy wheels<sup>7</sup> by BBS
- TORSEN<sup>®</sup> limited-slip rear differential<sup>27</sup>
- Clear-coated carbon fiber spoiler



## KEY SPECS

416<sup>HP1</sup>  
IS F

5.0L V8 ENGINE

371<sup>LB.-FT1</sup>

TORQUE

0-60<sup>IN</sup> 4.6s<sup>120</sup>

PERFORMANCE

RWD

DRIVETRAIN

16 / 23 / 18<sup>19</sup> <sup>EST</sup>  
MPG

FUEL ECONOMY, EPA-ESTIMATED RATINGS  
(CITY / HIGHWAY / COMBINED)

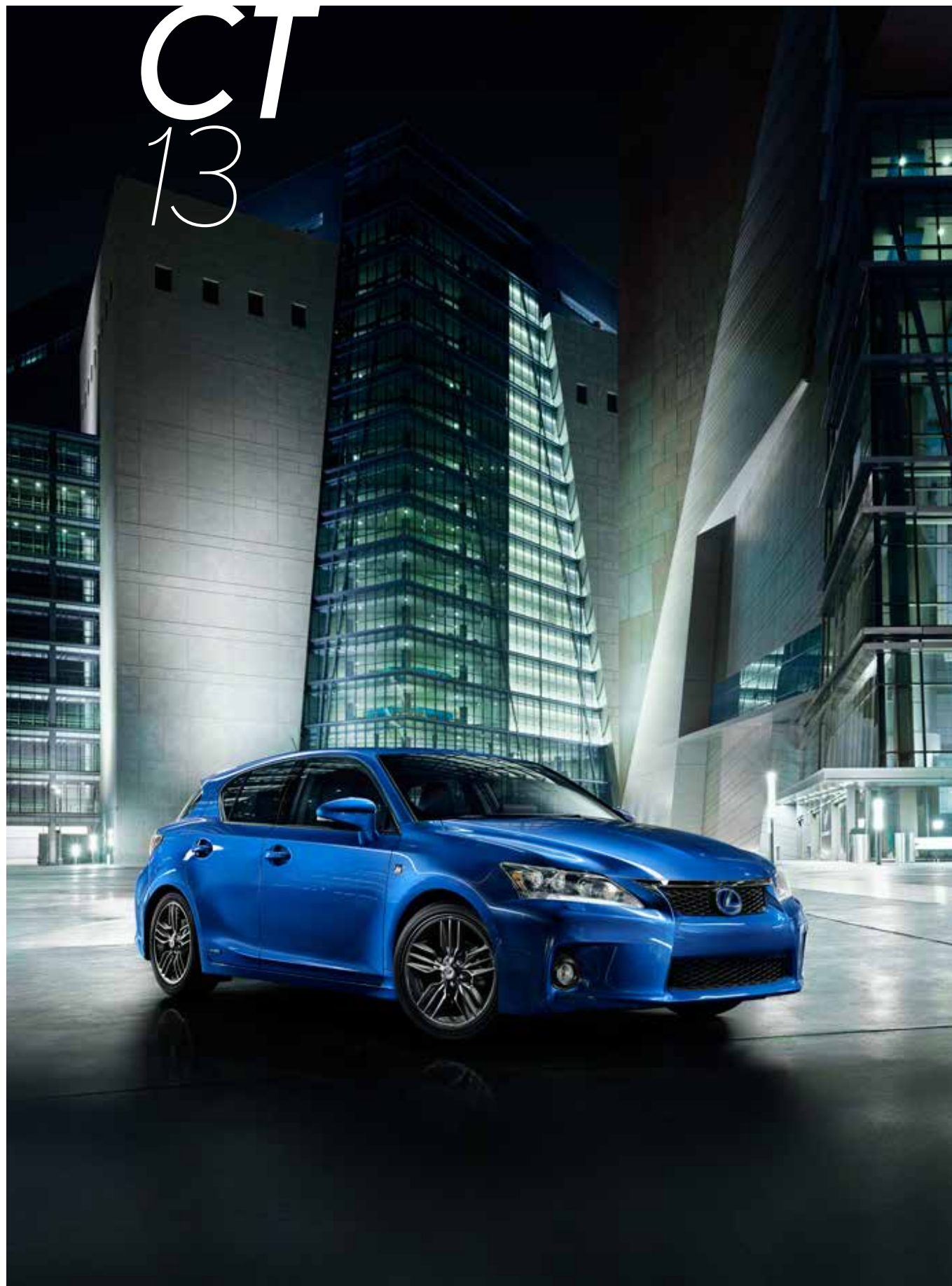
8-SPEED

SPORT DIRECT-SHIFT AUTOMATIC  
TRANSMISSION WITH PADDLE SHIFT

## MODELS

IS F

# CT 13



## SELECT FEATURES

- 1.8L Atkinson-cycle engine with Lexus Hybrid Drive and 42 MPG combined rating<sup>28</sup>
- Drive Mode Select with ECO, Normal, Sport and EV<sup>24</sup> modes
- Sport-bolstered front seats
- 60/40-split fold-down rear seatbacks
- Exclusive styling and sport-tuned suspension (CT F SPORT)
- Available Navigation System<sup>11</sup> or Lexus Display Audio System



## KEY SPECS

134<sup>HP</sup> TOTAL SYSTEM  
CTh / F SPORT w/Lexus Hybrid Drive

1.8L ATKINSON-CYCLE I-4 ENGINE

43 / 40 / 42<sup>EST</sup> MPG

FUEL ECONOMY, EPA-ESTIMATED RATINGS  
(CITY / HIGHWAY / COMBINED)

ECVT

ELECTRONICALLY CONTROLLED  
CONTINUOUSLY VARIABLE TRANSMISSION

0-60 IN 9.8<sup>S20</sup>

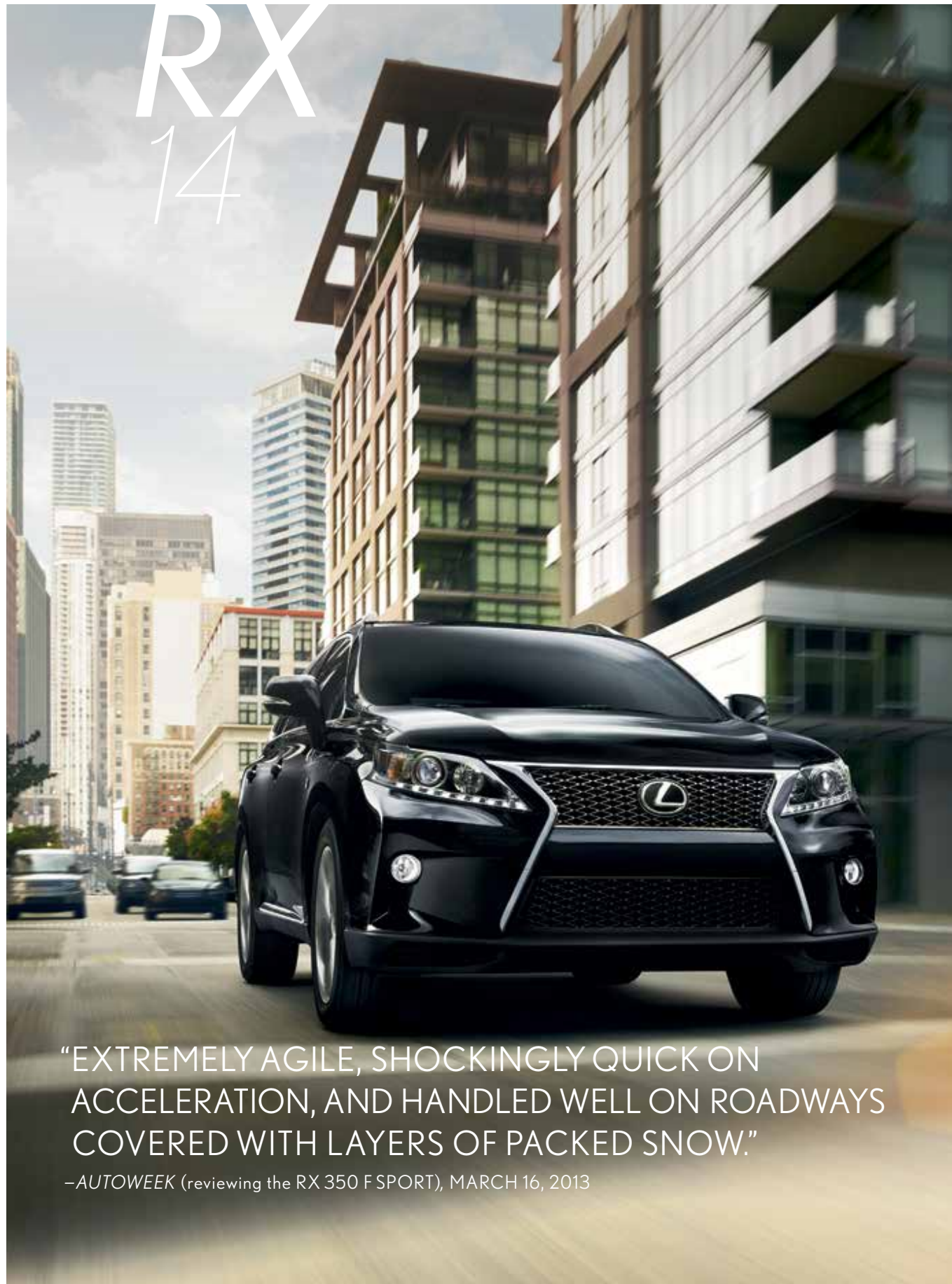
PERFORMANCE

FWD

DRIVETRAIN

**MODELS** CT 200h // CT 200h F SPORT

# RX 14



“EXTREMELY AGILE, SHOCKINGLY QUICK ON ACCELERATION, AND HANDLED WELL ON ROADWAYS COVERED WITH LAYERS OF PACKED SNOW.”

—AUTOWEEK (reviewing the RX 350 F SPORT), MARCH 16, 2013

## SELECT FEATURES

- 40/20/40-split fold-down rear seatbacks and 80.3 cubic feet cargo capacity<sup>29</sup>
- Power rear door
- Exclusive eight-speed transmission and performance styling (RX F SPORT)
- Available dual-screen Rear-Seat Entertainment System<sup>30</sup>
- Available 15-speaker Mark Levinson Audio<sup>10</sup>
- Class-leading<sup>31</sup> 10 standard airbags<sup>23</sup>



## KEY SPECS

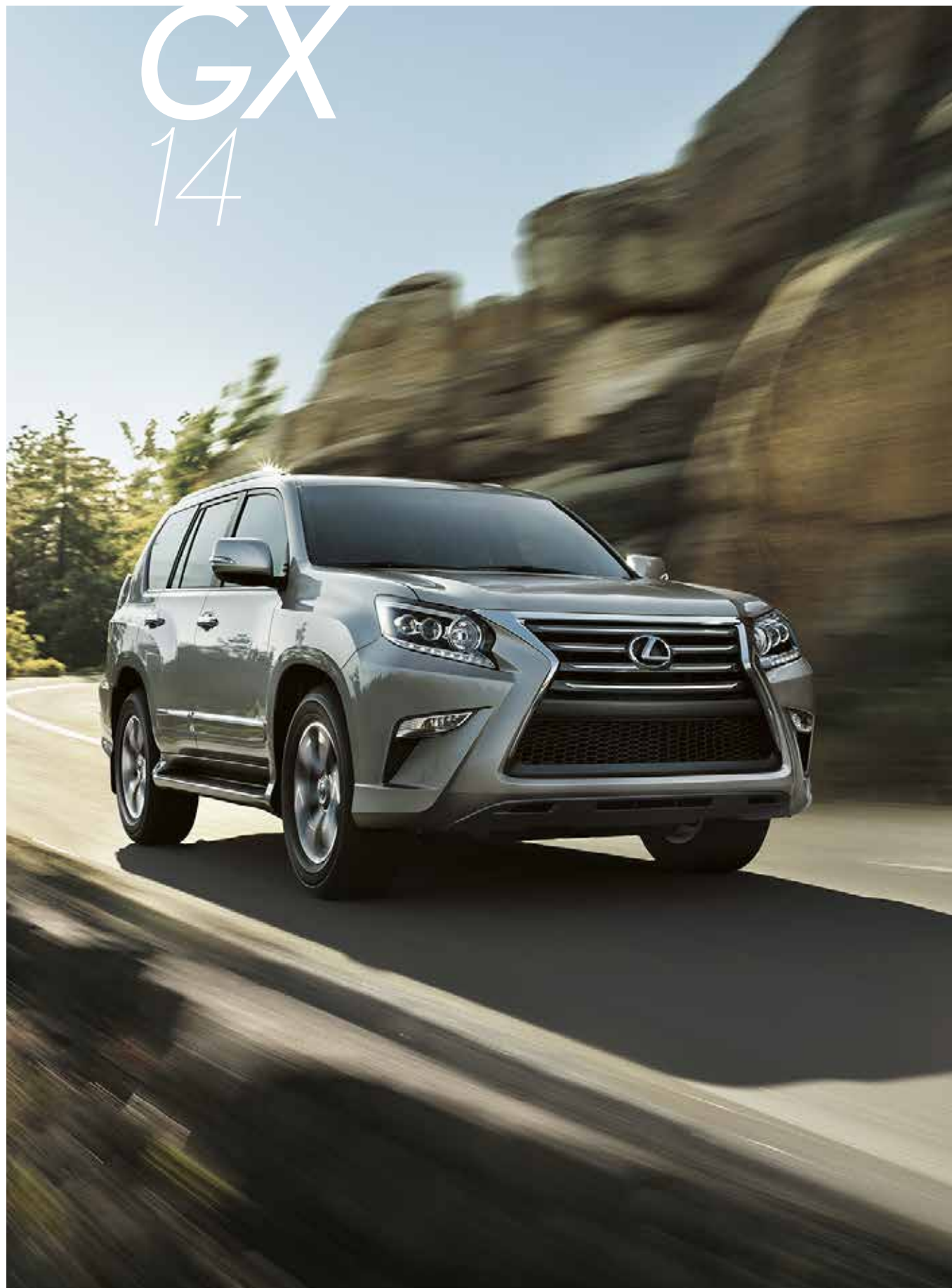
270 <sup>HP</sup> RX / RX F SPORT	295 <sup>TOTAL SYSTEM HP<sup>1</sup></sup> RXh w/Lexus Hybrid Drive	0-60 IN	7.7 <sup>S20</sup> RX FWD / F SPORT	7.8 <sup>S20</sup> RX AWD	7.8 <sup>S120</sup> RXh FWD	7.4 <sup>S120</sup> RXh AWD
3.5L V6 ENGINE	3.5L V6 ATKINSON-CYCLE ENGINE	PERFORMANCE				
18 / 25 / 21 <sup>19</sup> EST. MPG RX FWD	18 / 24 / 20 <sup>19</sup> EST. MPG RX AWD	32 / 28 / 30 <sup>19</sup> EST. MPG RXh FWD	30 / 28 / 29 <sup>19</sup> EST. MPG RXh AWD	18 / 26 / 21 <sup>19</sup> EST. MPG RX F SPORT		

FUEL ECONOMY, EPA-ESTIMATED RATINGS (CITY / HIGHWAY / COMBINED)

6-SPEED RX	8-SPEED RX F SPORT	ECVT RXh	FWD STANDARD RX / RXh	OR	AWD AVAILABLE RX / RXh STANDARD RX F SPORT
AUTOMATIC TRANSMISSION		AUTOMATIC TRANSMISSION WITH PADDLE SHIFT	ELECTRONICALLY CONTROLLED CONTINUOUSLY VARIABLE TRANSMISSION		DRIVETRAIN

**MODELS** RX 350 // RX 350 F SPORT // RX 450h

# GX 14



## SELECT FEATURES

- 6,500-lb towing capacity<sup>32,33</sup> including Trailer Sway Control<sup>34</sup>
- Kinetic Dynamic Suspension System (KDSS), four-wheel Active Traction Control, and available Crawl Control<sup>5</sup>
- Available dual-screen Rear-Seat Entertainment System<sup>30</sup>
- Class-leading<sup>35</sup> 10 standard airbags<sup>23</sup>
- Backup camera<sup>36</sup> with available Wide-view Front and Side Monitor system<sup>37</sup>
- Fold-flat third-row seats

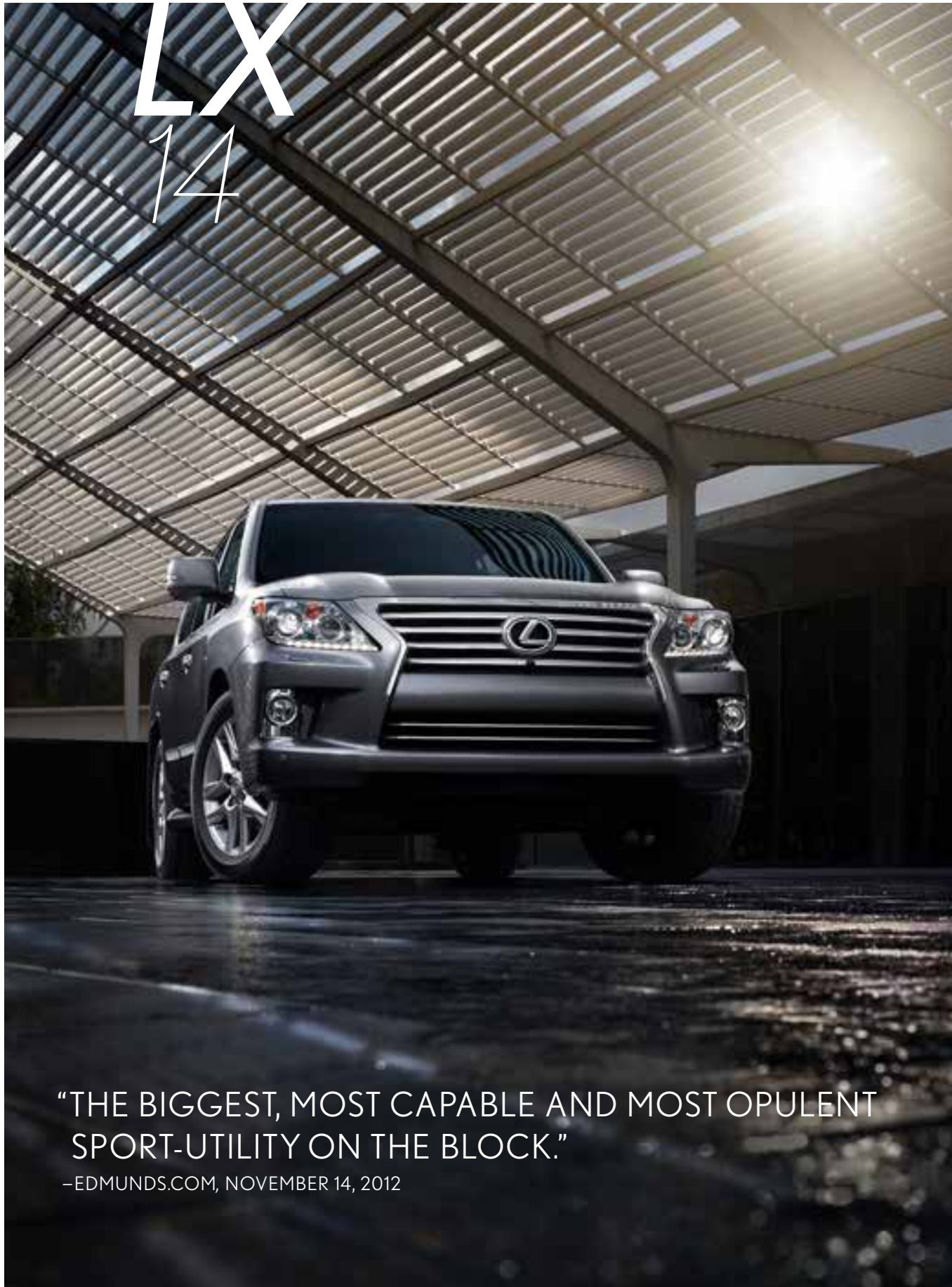


## KEY SPECS

301 <sup>HP1</sup>	329 <sup>LB-FT1</sup>	6-SPEED	0-60 IN 7.8 <sup>S120</sup>	4WD
4.6L V8 ENGINE	TORQUE	AUTOMATIC TRANSMISSION	PERFORMANCE	FULL-TIME WITH TWO-SPEED TRANSFER CASE
15 / 20 / 17 <sup>19</sup> EST. MPG	64.7 <sup>CU FT29</sup>	7-PASSENGER		
FUEL ECONOMY, EPA-ESTIMATED RATINGS (CITY / HIGHWAY / COMBINED)	MAXIMUM CARGO CAPACITY	OCCUPANT SEATING		

**MODELS** GX 460 // GX 460 PREMIUM // GX 460 LUXURY

# LX 14



“THE BIGGEST, MOST CAPABLE AND MOST OPULENT  
SPORT-UTILITY ON THE BLOCK.”

—EDMUNDS.COM, NOVEMBER 14, 2012



## SELECT FEATURES

5.7L V8 with 383 hp<sup>1</sup> and 403 lb-ft torque<sup>1</sup>

7,000-lb towing capacity<sup>33,38</sup> including Trailer Sway Control<sup>34</sup>

Four-wheel Active Traction Control with Multi-Terrain Select, Crawl Control<sup>5</sup> and Downhill Assist Control<sup>39</sup>

Backup camera<sup>36</sup> with available Wide-view Front and Side Monitor System<sup>37</sup>

Navigation System<sup>11</sup> with subscription-free Lexus Enform App Suite<sup>13</sup>

Available 19-speaker Mark Levinson Reference Surround Sound Audio System<sup>10</sup>



## KEY SPECS

383<sup>HP1</sup>

5.7L V8 ENGINE

403<sup>LB-FT1</sup>

TORQUE

6-SPEED

AUTOMATIC  
TRANSMISSION

0-60<sup>IN</sup> 7.5<sup>S120</sup>

PERFORMANCE

4WD

FULL-TIME WITH TWO-SPEED  
TRANSFER CASE

12 / 17 / 14<sup>19</sup> EST  
MPG

FUEL ECONOMY, EPA-ESTIMATED RATINGS  
(CITY / HIGHWAY / COMBINED)

83.1<sup>CU FT29</sup>

MAXIMUM CARGO  
CAPACITY

8-PASSENGER

OCCUPANT SEATING

## MODELS

LX 570



# AMAZING, UNLEASHED.

To see how Lexus continues to push the limits of the driving experience and inspire how the world moves, view our line of concept and future vehicles at [lexus.com/future](http://lexus.com/future).



**DISCLOSURES**

1. Ratings achieved using the required premium unleaded gasoline with an octane rating of 91 or higher. If premium fuel is not used, performance will decrease.
2. Vehicle Dynamics Integrated Management (VDIM) is an electronic system designed to help the driver maintain vehicle control under adverse conditions. It is not a substitute for safe driving practices. Factors including speed, road conditions and driver steering input can all affect whether VDIM will be effective in preventing a loss of control. See *Owner's Manual* for further details.
3. F SPORT Accessories are warranted for 12 months from the date of installation or for the balance of the new-car or Certified Pre-Owned (CPO) warranty in force at the date of installation, whichever is greater, when installed by an authorized Lexus dealer. F SPORT Accessories installed by anyone other than an authorized Lexus dealer are warranted for 12 months from the date of purchase only, and the warranty coverage is limited to the replacement value of the F SPORT Accessories. These warranties do not cover maintenance services such as replacement of brake pads/linings and clutch linings or noise, vibration, cosmetic conditions and other deterioration caused by normal wear and tear. Part failure caused by improper installation by anyone other than an authorized Lexus dealer may void the F SPORT Accessories warranty, the new-vehicle warranty or both. F SPORT is a trademark of Toyota Motor Corporation. Products available through participating Lexus dealers.
4. Vehicle shown is a special project car, modified with non-Genuine Lexus parts and accessories. Modification with these non-Genuine Lexus parts or accessories will void the Lexus warranty, may negatively impact vehicle performance and safety, and may not be street legal.
5. Crawl Control is designed for driving on difficult terrain at low speeds. It assists the driver by controlling acceleration and braking, allowing the driver to focus on steering. The GX 460 and LX 570 are designed to meet off-road driving requirements, but off-roading is inherently dangerous. Always wear seatbelts.
6. Based on 2013/2014 EPA-estimated fuel economy.
7. 19-in performance tires are expected to experience greater tire wear than conventional tires. Tire life may be substantially less than 15,000 miles, depending upon driving conditions.
8. *The Bluetooth*® word mark and logos are registered trademarks owned by Bluetooth SIG, Inc. and any use of such marks by Lexus is under license. Other trademarks and trade names are those of their respective owners. The phones on [lexus.com](http://lexus.com) have been tested for *Bluetooth*® wireless technology compatibility with Lexus vehicles. Performance will vary based on phone software version, coverage and your wireless carrier.
9. Be sure to obey traffic regulations and maintain awareness of road and traffic conditions.
10. Mark Levinson® is a registered trademark of Harman International Industries, Inc.
11. Always drive safely, obey traffic laws & focus on the road while driving. Availability and accuracy of the information provided by the Navigation System is dependent upon many factors. Use common sense when relying on information provided. Services and programming subject to change. Services not available in every city or roadway. Navigation updates are available at an additional cost from your local Lexus dealer. See your *Navigation System Owner's Manual* or Lexus dealer for details.
12. Up to 90% recyclable based on ISO 22628 standards.
13. Always drive safely, obey traffic laws & focus on the road while driving. Apps/services vary by phone/carrier; functionality depends on many factors. Select apps use large amounts of data; you are responsible for charges. Apps & services subject to change. Apps identified by ™ or ® are trademarks or registered trademarks of their respective companies. For enrollment and more details, see [lexus.com/enform](http://lexus.com/enform).
14. iPhone® and iPad® are registered trademarks of Apple, Inc. All rights reserved.
15. FaceTime® is a registered trademark of Apple Inc. All rights reserved.
16. Leg rest may not fully recline based on height of rear-seat passenger. Do not allow passengers to sit in a seat that has been fully or severely reclined while driving. This feature is intended for use only when the vehicle is parked. While the vehicle is being driven, all vehicle occupants should have the seatback upright, sit well back in the seat and properly wear the seatbelts provided. In the event of a collision, the more the seat is reclined, the greater the risk of death or personal injury. See *Owner's Manual* for additional information.
17. If leg rest is in use, seating capacity could be reduced from four to three.
18. Advanced Pre-Collision System is designed to help reduce the crash speed and damage in certain frontal collisions only. Driver Attention Monitor is designed to alert the driver if a potential hazard is detected ahead and the driver's face appears to be turned away. They are not collision-avoidance systems and are not substitutes for safe and attentive driving. System effectiveness depends on many factors. See *Owner's Manual* for details.
19. 2014 EPA-estimated ratings. Actual mileage will vary.
20. Performance figures are for comparison only and were obtained with prototype vehicles by professional drivers using special safety equipment and procedures. Do not attempt.
21. The Pre-Collision System is designed to help reduce the crash speed and damage in certain frontal collisions only. It is not a collision-avoidance system and is not a substitute for safe and attentive driving. System effectiveness depends on many factors, such as speed, driver input and road conditions. See *Owner's Manual* for further information.
22. Based on 2013 Near-Luxury Class four-door sedans.
23. All the airbag (AB) systems are Supplemental Restraint Systems. All ABs are designed to inflate only under certain conditions and in certain types of severe collisions: frontal and knee ABs typically inflate in frontal collisions; side and side curtain ABs in side collisions; Roll-Sensing Curtain ABs at a severe tilt degree, roll or lateral G-force. In all other accidents, the ABs will not inflate. To decrease the risk of injury from an inflating AB, always wear seatbelts, sit upright in the middle of the seat as far back as possible and do not lean against the door. Do not put objects in front of an AB or around the seatback. Do not use a rearward-facing child seat in any front passenger seat. The force of an inflating AB may cause serious injury or death. See *Owner's Manual* for further information/warnings.
24. CAUTION! When driving a hybrid vehicle, pay special attention to the area around the vehicle. Because there is little vehicle noise in electric-only mode, pedestrians, people riding bicycles or other people and vehicles in the area may not be aware of the vehicle starting off or approaching them, so take extra care while driving. EV mode works under certain conditions at low speeds for up to a mile. See *Owner's Manual*.
25. Always drive safely, obey traffic laws & focus on the road while driving. Availability and accuracy of the information provided by HD services is dependent upon many factors. Services not available in every city or roadway. Use common sense when relying on information provided. HD Radio™ Technology manufactured under license from iBiquity Digital Corporation U.S. and Foreign Patents. HD Radio™ and the HD, HD Radio, and "Arc" logos are proprietary trademarks of iBiquity Digital Corp.
26. High-friction brakes require periodic inspection and measurement as outlined in the *Warranty and Services Guide*. The pads and rotors are expected to experience greater wear than conventional brakes. Pad life may be less than 20,000 miles, and brake rotor life may be less than 50,000 miles depending on road conditions.
27. TORSEN® is a registered trademark of Zexel Torsen, Inc.
28. 2013 EPA-estimated 43/40/42 (city/highway/combined) MPG. Actual mileage will vary.
29. Cargo and load capacity limited by weight and distribution.
30. A single-disc DVD player is standard. A separate DVD player or game system utilizing the center console's video/audio inputs is required in order to use the split-screen function of the dual-screen system.
31. 2014 RX vs. 2013 competitors based on Luxury Midsize SUVs.
32. Before towing, confirm your vehicle and trailer are compatible, hooked up and loaded properly and that you have any necessary additional equipment. Do not exceed any Weight Ratings and follow all instructions in your *Owner's Manual*. The maximum you can tow depends on the total weight of any cargo, occupants and available equipment.
33. Please consult your Lexus dealer or *Owner's Manual* for towing and load specifications.
34. Trailer Sway Control (TSC) is an electronic system designed to help the driver maintain vehicle control under adverse conditions. It is not a substitute for safe driving practices. Factors including speed, road conditions and driver steering input can all affect whether TSC will be effective in preventing a loss of control. See *Owner's Manual* for details.
35. 2014 GX vs. 2013 competitors based on Luxury Midsize SUVs.
36. The backup camera does not provide a comprehensive view of the rear area of the vehicle. You should also look around outside your vehicle and use your mirrors to confirm rearward clearance. Cold weather may limit effectiveness and view may become cloudy.
37. The Wide-view Front and Side Monitor does not provide a comprehensive view of the front and side areas of the vehicle. You should also look around outside your vehicle and use your mirrors to confirm clearance. Cold weather will limit effectiveness and view may become cloudy.
38. Before towing, confirm your vehicle and trailer are compatible, hooked up properly and you have any necessary additional equipment. If gross trailer weight is above 5,000 lb (2,268 kg), it is necessary to use a weight-distributing hitch with sufficient capacity. Do not exceed any Weight Ratings and follow all instructions and cautions from your trailer-hitch manufacturer and vehicle *Owner's Manual*. The maximum amount you can tow depends on the total weight of any cargo, occupants and available equipment.
39. DAC is designed to help the driver maintain vehicle control and speed on steep downhill descents. It is not a substitute for safe driving judgment and practices. Factors including speed, grade, surface conditions and driver input can all affect whether DAC will be effective in preventing a loss of control. See *Owner's Manual* for further details.

Lexus strives to build vehicles to match customer interest, and thus they typically are built with popular options and option packages. Not all options/packages are available separately, and some may not be available in all regions of the country. See [lexus.com](http://lexus.com) for information about options/packages commonly available in your area. If you would prefer a vehicle without any or with different options, contact your dealer to check for current availability or the possibility of placing a special order. Specifications, features, equipment, technical data, performance figures, options, and color and trim are based upon information available at time of printing, are subject to change without notice, and are for mainland U.S.A. vehicles only. Some vehicles shown with available equipment. See your Lexus dealer for details. Lexus reminds you to wear seatbelts, secure children in rear seat, obey all traffic laws and drive responsibly. For more information, call 800-USA-LEXUS (872-5398) or visit [lexus.com](http://lexus.com). To learn more about your financing options, contact your Lexus dealer or call Lexus Financial Services at 800-874-7050.

